

SERVICE & PARTS MANUAL



Main Office | 101 Hilltopper Way, Glasgow KY, 42141
Shipping & Receiving | 725 Roseville Rd, Glasgow KY, 42141

(270) 651-9166 | Service & Parts
spare_parts@spantechllc.com

www.spantechconveyors.com

TABLE OF CONTENTS



CHAIN | BASIC COMPONENTS - 4

- Basic Components - 5*
- How To Determine Which Chain Rod You Need - 6*
- Chain Rods Stainless Steel - 7*
- Chain Rods Plastic - 9*

CHAIN TYPES | SUPERTIGHT - 10

- 25mm Supertight Chain - 11-14*
- 50mm Supertight Chain - 15*
- 50mm Pillowtop Chain - 16*
- Accumulation Options - 18*

CHAIN TYPES | LEGACY CHAIN - 19

- Multispan Chain - 20*
- Monospan - 23*
- Maxispan - 24*

CHAIN TYPES | SPECIALTY CHAIN - 26

- Closed Top Chain - 27*
- Microspan - 28*
- Minilink & J-Trax Chain - 29*

BASIC CONVEYOR COMPONENTS - 30

- Wearstrip & Hardware - 31*
- Conveyor Specialty Mounting Hardware - 32*
- Maintenance Kit - 33*
- Spanlube - 34*

DRIVES & IDLERS | FULL ASSEMBLY

- 25mm Standard Drive & Idler - 36*
- 50mm Standard Drive & Idler - 37*
- Minilink Idler - 38*
- Low Profile Idler - 39*
- Intermediate Drive Components - 40*

DRIVES & IDLERS | SHAFTS & SPROCKETS - 42

- Maxispan 50mm Sprocket Assembly - 43*
- Multispan Supertight 25mm Sprocket Assembly - 44*
- Multispan Supertight 50mm Sprocket Assembly - 45*
- Minilink 25mm Sprocket Assembly - 46*
- Microspan 1.25" Bore Sprocket Assembly - 47*
- Microspan 1.91" Bore Sprocket Assembly - 48*
- Molded Microspan 20mm Bore Sprocket Assembly - 49*
- Microspan Hex Bore Sprocket Assembly - 50*

TRANSFER | COMPONENTS - 51

- Microspan Transfer Assembly - 52*
- Microspan Transfer Cover Assembly - 54*
- Microspan Transfer Mount Chasis - 55*

GEARMOTOR - COMPONENTS - 56

- Nord Gearmotor Assembly - 57*
- Nord Gearmotor Extractors - 58*
- SEW Gearmotor Assembly - 59*
- SEW Gearmotor Extractors - 60*

A large graphic consisting of a central yellow horizontal bar with a diagonal hatched pattern, flanked by white areas with a light gray diagonal hatched pattern.

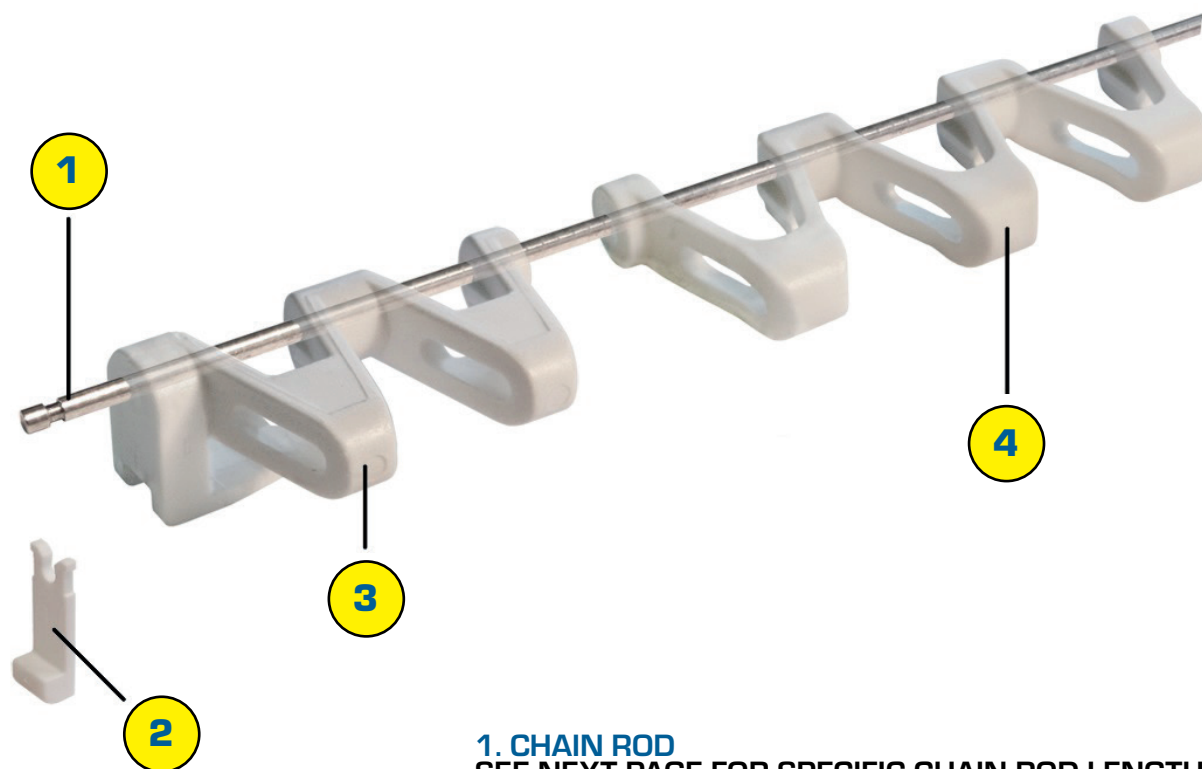
CHAIN

[BASIC COMPONENTS]



CHAIN BASIC COMPONENTS

KEY: C = CENTER • LH = LEFT HAND • RH = RIGHT HAND • MSG = MOVING SIDE GUIDE • (PU) = POLYURETHANE • (S) = SANTOPRENE
• (A) = ACETAL • (PP) = POLYPROPYLENE



1. CHAIN ROD

SEE NEXT PAGE FOR SPECIFIC CHAIN ROD LENGTHS AND TYPES

2. LOCK TAB

DSO140A | MULTISPAN LOCK TAB ACETAL
DSO220A | MONOSPAN/MAXISPAN LOCK TAB ACETAL

3. SIDE LINKS

SEE INDIVIDUAL CHAIN TYPE FOR PART #

4. CENTER LINKS






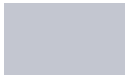
SEE INDIVIDUAL CHAIN TYPE FOR PART #

HOW TO DETERMINE WHICH CHAIN ROD YOU NEED

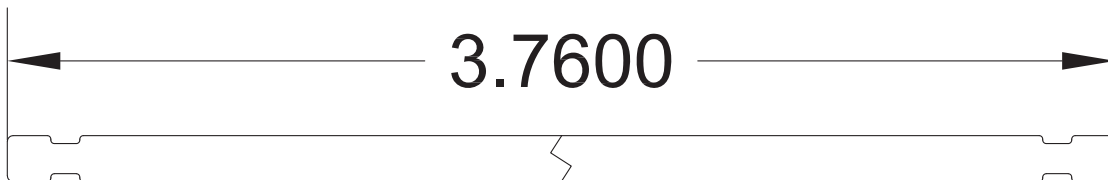
KEY: C = CENTER • LH = LEFT HAND • RH = RIGHT HAND • MSG = MOVING SIDE GUIDE • (PU) = POLYURETHANE • (S) = SANTOPRENE
• (A) = ACETAL • (PP) = POLYPROPYLENE

EXAMPLE PART NUMBER EXPLAINED

CCR03764SS01ST

	CCR/UCR/CR (COATED, UNCOATED, CHAIN ROD)
	CHAIN / ROD WIDTH
	ROD DIAMETER
	ROD MATERIAL
	LATEST REVISION #
	ST/SP/P (STANDARD, SPIRAL, OR PLASTIC)

CHAIN / ROD WIDTH





STAINLESS STEEL CHAIN RODS

KEY: C = CENTER • LH = LEFT HAND • RH = RIGHT HAND • MSG = MOVING SIDE GUIDE • (PU) = POLYURETHANE • (S) = SANTOPRENE
• (A) = ACETAL • (PP) = POLYPROPYLENE

CCR03764SS01ST	3.76 4mm STAINLESS COATED CHAIN ROD
CCR04944SS01ST	4.94 4mm STAINLESS COATED CHAIN ROD
CCR06134SS01ST	6.13 4mm STAINLESS COATED CHAIN ROD
CCR07314SS01ST	7.31 4mm STAINLESS COATED CHAIN ROD
CCR08494SS01ST	8.49 4mm STAINLESS COATED CHAIN ROD
CCR09674SS01ST	9.67 4mm STAINLESS COATED CHAIN ROD
CCR10854SS01ST	10.85 4mm STAINLESS COATED CHAIN ROD
CCR12034SS01ST	12.03 4mm STAINLESS COATED CHAIN ROD
CCR13214SS01ST	13.21 4mm STAINLESS COATED CHAIN ROD
CCR14394SS01ST	14.39 4mm STAINLESS COATED CHAIN ROD
CCR15574SS01ST	15.57 4mm STAINLESS COATED CHAIN ROD
CCR16764SS01ST	16.76 4mm STAINLESS COATED CHAIN ROD
CCR17944SS01ST	17.94 4mm STAINLESS COATED CHAIN ROD
CCR19124SS01ST	19.12 4mm STAINLESS COATED CHAIN ROD
CCR20304SS01ST	20.30 4mm STAINLESS COATED CHAIN ROD
CCR21484SS01ST	21.48 4mm STAINLESS COATED CHAIN ROD
CCR22664SS01ST	22.66 4mm STAINLESS COATED CHAIN ROD
CCR23844SS01ST	23.84 4mm STAINLESS COATED CHAIN ROD
CCR25024SS01ST	25.02 4mm STAINLESS COATED CHAIN ROD
CCR26204SS01ST	26.20 4mm STAINLESS COATED CHAIN ROD
CCR27394SS01ST	27.39 4mm STAINLESS COATED CHAIN ROD
CCR28574SS01ST	28.57 4mm STAINLESS COATED CHAIN ROD
CCR29754SS01ST	29.75 4mm STAINLESS COATED CHAIN ROD
CCR30934SS01ST	30.93 4mm STAINLESS COATED CHAIN ROD
CCR32114SS01ST	32.11 4mm STAINLESS COATED CHAIN ROD
CCR33294SS01ST	33.29 4mm STAINLESS COATED CHAIN ROD
CCR34474SS01ST	34.47 4mm STAINLESS COATED CHAIN ROD
CCR35654SS01ST	35.65 4mm STAINLESS COATED CHAIN ROD
CCR36834SS01ST	36.83 4mm STAINLESS COATED CHAIN ROD
CCR38024SS01ST	38.02 4mm STAINLESS COATED CHAIN ROD
CCR39204SS01ST	39.20 4mm STAINLESS COATED CHAIN ROD
CCR40384SS01ST	40.38 4mm STAINLESS COATED CHAIN ROD
CCR41564SS01ST	41.56 4mm STAINLESS COATED CHAIN ROD
CCR42744SS01ST	42.74 4mm STAINLESS COATED CHAIN ROD
CCR43924SS01ST	43.92 4mm STAINLESS COATED CHAIN ROD
CCR45104SS01ST	45.10 4mm STAINLESS COATED CHAIN ROD
CCR46284SS01ST	46.28 4mm STAINLESS COATED CHAIN ROD
CCR47464SS01ST	47.46 4mm STAINLESS COATED CHAIN ROD

STAINLESS STEEL CHAIN RODS

KEY: C = CENTER • LH = LEFT HAND • RH = RIGHT HAND • MSG = MOVING SIDE GUIDE • (PU) = POLYURETHANE • (S) = SANTOPRENE
• (A) = ACETAL • (PP) = POLYPROPYLENE

UCR03764SS01ST	3.76 4mm STAINLESS UNCOATED CHAIN ROD 304 SERIES
UCR04944SS01ST	4.94 4mm STAINLESS UNCOATED CHAIN ROD 304 SERIES
UCR06134SS01ST	6.13 4mm STAINLESS UNCOATED CHAIN ROD 304 SERIES
UCR07314SS01ST	7.31 4mm STAINLESS UNCOATED CHAIN ROD 304 SERIES
UCR08494SS01ST	8.49 4mm STAINLESS UNCOATED CHAIN ROD 304 SERIES
UCR09674SS01ST	9.67 4mm STAINLESS UNCOATED CHAIN ROD 304 SERIES
UCR10854SS01ST	10.85 4mm STAINLESS UNCOATED CHAIN ROD 304 SERIES
UCR12034SS01ST	12.03 4mm STAINLESS UNCOATED CHAIN ROD 304 SERIES
UCR13214SS01ST	13.21 4mm STAINLESS UNCOATED CHAIN ROD 304 SERIES
UCR14394SS01ST	14.39 4mm STAINLESS UNCOATED CHAIN ROD 304 SERIES
UCR15574SS01ST	15.57 4mm STAINLESS UNCOATED CHAIN ROD 304 SERIES
UCR16764SS01ST	16.76 4mm STAINLESS UNCOATED CHAIN ROD 304 SERIES
UCR17944SS01ST	17.94 4mm STAINLESS UNCOATED CHAIN ROD 304 SERIES
UCR19124SS01ST	19.12 4mm STAINLESS UNCOATED CHAIN ROD 304 SERIES
UCR20304SS01ST	20.30 4mm STAINLESS UNCOATED CHAIN ROD 304 SERIES
UCR21484SS01ST	21.48 4mm STAINLESS UNCOATED CHAIN ROD 304 SERIES
UCR22664SS01ST	22.66 4mm STAINLESS UNCOATED CHAIN ROD 304 SERIES
UCR23844SS01ST	23.84 4mm STAINLESS UNCOATED CHAIN ROD 304 SERIES
UCR25024SS01ST	25.02 4mm STAINLESS UNCOATED CHAIN ROD 304 SERIES
UCR26204SS01ST	26.20 4mm STAINLESS UNCOATED CHAIN ROD 304 SERIES
UCR27394SS01ST	27.39 4mm STAINLESS UNCOATED CHAIN ROD 304 SERIES
UCR28574SS01ST	28.57 4mm STAINLESS UNCOATED CHAIN ROD 304 SERIES
UCR29754SS01ST	29.75 4mm STAINLESS UNCOATED CHAIN ROD 304 SERIES
UCR30934SS01ST	30.93 4mm STAINLESS UNCOATED CHAIN ROD 304 SERIES
UCR32114SS01ST	32.11 4mm STAINLESS UNCOATED CHAIN ROD 304 SERIES
UCR33294SS01ST	33.29 4mm STAINLESS UNCOATED CHAIN ROD 304 SERIES
UCR34474SS01ST	34.47 4mm STAINLESS UNCOATED CHAIN ROD 304 SERIES
UCR35654SS01ST	35.65 4mm STAINLESS UNCOATED CHAIN ROD 304 SERIES
UCR36834SS01ST	36.83 4mm STAINLESS UNCOATED CHAIN ROD 304 SERIES
UCR38024SS01ST	38.02 4mm STAINLESS UNCOATED CHAIN ROD 304 SERIES
UCR39204SS01ST	39.20 4mm STAINLESS UNCOATED CHAIN ROD 304 SERIES
UCR40384SS01ST	40.38 4mm STAINLESS UNCOATED CHAIN ROD 304 SERIES
UCR41564SS01ST	41.56 4mm STAINLESS UNCOATED CHAIN ROD 304 SERIES
UCR42744SS01ST	42.74 4mm STAINLESS UNCOATED CHAIN ROD 304 SERIES
UCR43924SS01ST	43.92 4mm STAINLESS UNCOATED CHAIN ROD 304 SERIES
UCR45104SS01ST	45.10 4mm STAINLESS UNCOATED CHAIN ROD 304 SERIES
UCR46284SS01ST	46.28 4mm STAINLESS UNCOATED CHAIN ROD 304 SERIES
UCR47464SS01ST	47.46 4mm STAINLESS UNCOATED CHAIN ROD 304 SERIES



PLASTIC CHAIN RODS

KEY: C = CENTER • LH = LEFT HAND • RH = RIGHT HAND • MSG = MOVING SIDE GUIDE • (PU) = POLYURETHANE • (S) = SANTOPRENE
• (A) = ACETAL • (PP) = POLYPROPYLENE

CR8.24-6P	CHAIN ROD - 8.24 MAXI
CR12.17-6P	CHAIN ROD - 12.17 MAXI
CR16.11-6P	CHAIN ROD - 16.11 MAXI
CR20.05-6P	CHAIN ROD - 20.05 MAXI
CR23.98-6P	CHAIN ROD - 23.98 MAXI
CR27.92-6P	CHAIN ROD - 27.92 MAXI
CR31.86-6P	CHAIN ROD - 31.86 MAXI
CR35.80-6P	CHAIN ROD - 35.80 MAXI
CR39.73-6P	CHAIN ROD - 39.73 MAXI
CR43.67-6P	CHAIN ROD - 43.67 MAXI
CR47.61-6P	CHAIN ROD - 47.61 MAXI
CR3.76-6P	CHAIN ROD - 3.76 MONO
CR7.53-6P	CHAIN ROD - 7.53 MONO
CR11.29-6P	CHAIN ROD - 11.29 MONO
CR15.06-6P	CHAIN ROD - 15.06 MONO
CR18.82-6P	CHAIN ROD - 18.82 MONO
CR22.58-6P	CHAIN ROD - 22.58 MONO
CR26.35-6P	CHAIN ROD - 26.35 MONO
CR30.11-6P	CHAIN ROD - 30.11 MONO
CR33.87-6P	CHAIN ROD - 33.87 MONO
CR37.64-6P	CHAIN ROD - 37.64 MONO
CR41.40-6P	CHAIN ROD - 41.40 MONO
CR45.17-6P	CHAIN ROD - 45.17 MONO



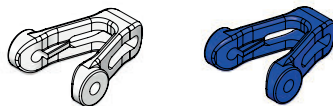
CHAIN TYPES

[SUPERTIGHT CHAIN]

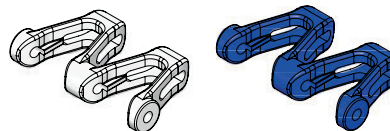


25 MM SUPERTIGHT CHAIN

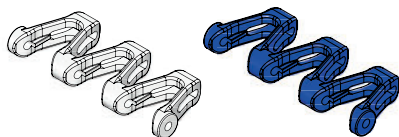
KEY: C = CENTER • LH = LEFT HAND • RH = RIGHT HAND • MSG = MOVING SIDE GUIDE • (PU) = POLYURETHANE • (S) = SANTOPRENE
• (A) = ACETAL • (PP) = POLYPROPYLENE



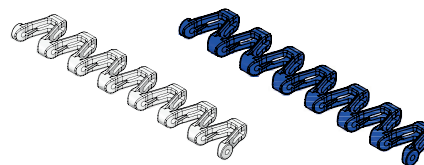
DS-C-ST-PL-1-A
MST-PLAIN CENTER (A)
DS-C-ST-PL-1-A-BLUE
MST-PLAIN CENTER BLUE (A)



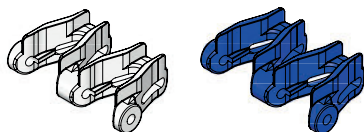
DS-C-ST-PL-2-A
MST-PLAIN CENTER (A)
DS-C-ST-PL-2-A-BLUE
MST-PLAIN CENTER BLUE (A)



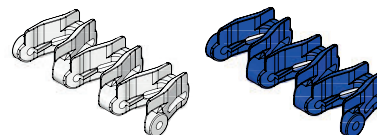
DS-C-ST-PL-3-A
MST-PLAIN CENTER (A)
DS-C-ST-PL-3-A-BLUE
MST-PLAIN CENTER BLUE (A)



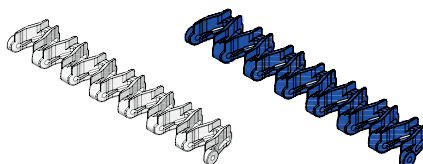
DS0134-02A
MST-PLAIN CENTER (A)
DS0134-02A-BLUE
MST-PLAIN CENTER BLUE (A)



DS-C-ST-6MM-RT-2-A
MST-6MM RAISED CENTER (A)
DS-C-ST-6MM-RT-2-A-BLUE
MST-6MM RAISED CENTER BLUE (A)



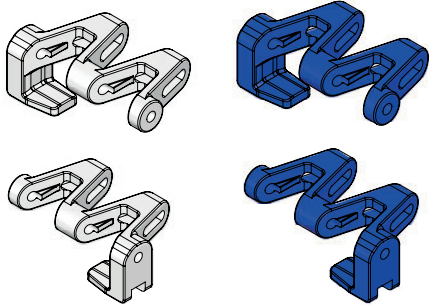
DS-C-ST-6MM-RT-3-A
MST-6MM RAISED CENTER (A)
DS-C-ST-6MM-RT-3-A-BLUE
MST-6MM RAISED CENTER BLUE (A)



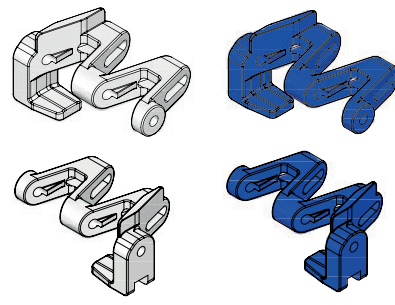
DS0135-02A
MST-6MM RAISED CENTER (A)
DS0135-02A-BLUE
MST-6MM RAISED CENTER BLUE (A)

25 MM SUPERTIGHT CHAIN

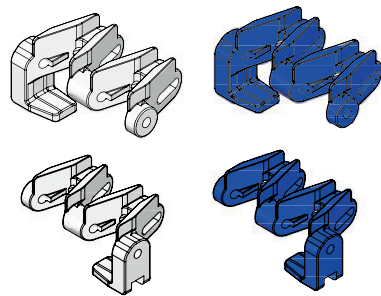
KEY: C = CENTER • LH = LEFT HAND • RH = RIGHT HAND • MSG = MOVING SIDE GUIDE • (PU) = POLYURETHANE • (S) = SANTOPRENE
 • (A) = ACETAL • (PP) = POLYPROPYLENE



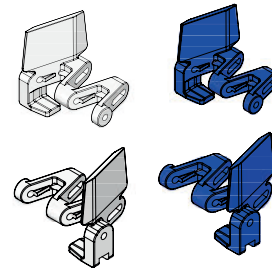
DS0126-02A | MST-LH PLAIN (A)
DS0126-02A-BLUE | MST-LH PLAIN BLUE (A)
DS0127-02A | MST-RH PLAIN (A)
DS0127-02A-BLUE | MST-RH PLAIN BLUE (A)



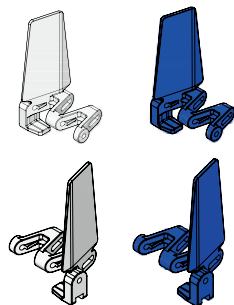
DS0128-03A | MST-LH 6MM MSG (A)
DS0128-03A-BLUE | MST-LH 6MM MSG BLUE (A)
DS0129-03A | MST-RH 6MM MSG (A)
DS0129-03A-BLUE | MST-RH 6MM MSG BLUE (A)



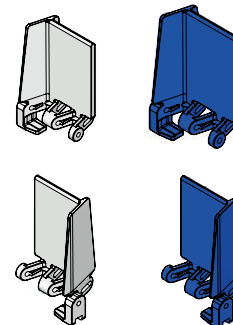
DS0132-02A | MST-LH 6MM RAISED (A)
DS0132-02A-BLUE | MST-LH 6MM RAISED BLUE (A)
DS0133-02A | MST - RH 6MM RAISED (A)
DS0133-02A-BLUE | MST - RH 6MM RAISED BLUE (A)



DS0136-01A-30 | MST-LH 30MM MSG (A)
DS0136-01A-30-BLUE | MST-LH 30MM MSG BLUE (A)
DS0137-01A-30 | MST-RH 30MM MSG (A)
DS0137-01A-30-BLUE | MST-RH 30MM MSG BLUE (A)



DS0136-01A | MST-LH 75MM MSG (A)
DS0136-01A-BLUE | MST-LH 75MM MSG BLUE (A)
DS0137-01A | MST-RH 75MM MSG(A)
DS0137-01A-BLUE | MST-RH 75MM MSG BLUE (A)

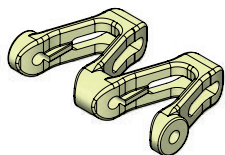


DS0138-01A | MST-LH 75MM MSG/PUSHER (A)
DS0138-01A-BLUE | MST-LH 75MM MSG/PUSHER BLUE (A)
DS0139-01A | MST-RH 75MM MSG/PUSHER (A)
DS0139-01A-BLUE | MST-RH 75MM MSG/PUSHER BLUE (A)

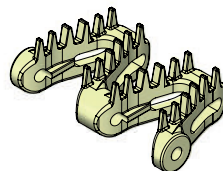


25 MM SUPERTIGHT CHAIN

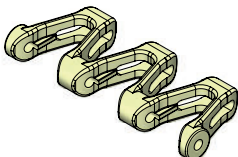
KEY: C = CENTER • LH = LEFT HAND • RH = RIGHT HAND • MSG = MOVING SIDE GUIDE • (PU) = POLYURETHANE • (S) = SANTOPRENE
• (A) = ACETAL • (PP) = POLYPROPYLENE



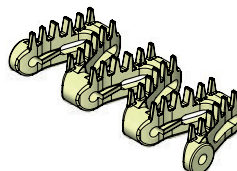
DS-C-ST-PL-2-S
MST-PLAIN HF CENTER 55D (S)



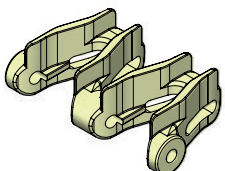
DS-C-ST-6MM-BT-2-S
MST-6MM BRUSH TOP CENTER 55D (S)



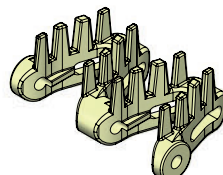
DS-C-ST-PL-3-S
MST-PLAIN HF CENTER 55D (S)



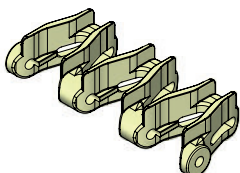
DS-C-ST-6MM-BT-3-S
MST-6MM BRUSH TOP CENTER 55D (S)



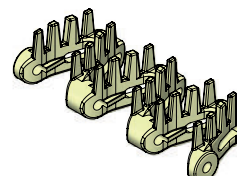
DS-C-ST-6MM-RT-2-S
MST-6MM RAISED CENTER 55D (S)



DS-C-ST-10MM-BT-2-S
MST-10MM BRUSH TOP CENTER 55D (S)



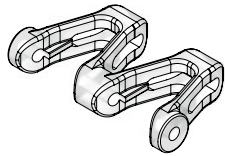
DS-C-ST-6MM-RT-3-S
MST-6MM RAISED CENTER 55D (S)



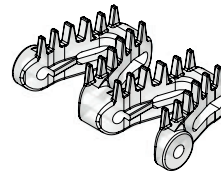
DS-C-ST-10MM-BT-3-S
MST-10MM BRUSH TOP CENTER 55D (S)

25 MM SUPERTIGHT CHAIN

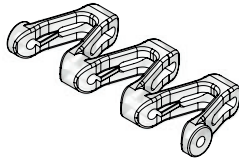
KEY: C = CENTER • LH = LEFT HAND • RH = RIGHT HAND • MSG = MOVING SIDE GUIDE • (PU) = POLYURETHANE • (S) = SANTOPRENE
 • (A) = ACETAL • (PP) = POLYPROPYLENE



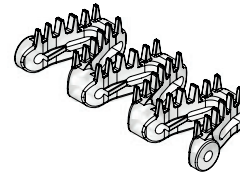
DS-C-ST-PL-2-PU
 MST-PLAIN HF CENTER 85D (PU)



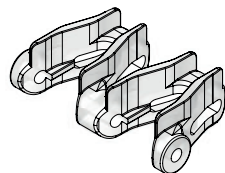
DS-C-ST-6MM-BT-2-PU
 MST-6MM BRUSH TOP CENTER 85D (PU)



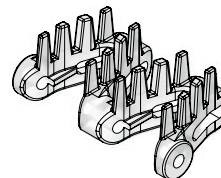
DS-C-ST-PL-3-PU
 MST-PLAIN HF CENTER 85D (PU)



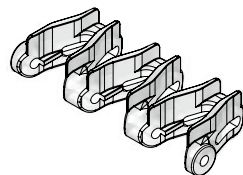
DS-C-ST-6MM-BT-3-PU
 MST-6MM BRUSH TOP CENTER 85D (PU)



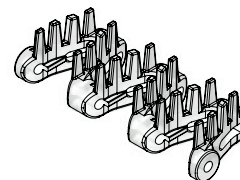
DS-C-ST-6MM-RT-2-PU
 MST-6MM RAISED CENTER 85D (PU)



DS-C-ST-10MM-BT-2-PU
 MST-10MM BRUSH TOP CENTER 85D (PU)



DS-C-ST-6MM-RT-3-PU
 MST-6MM RAISED CENTER 85D (PU)

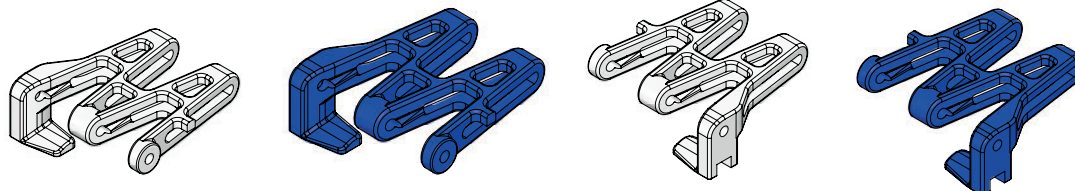


DS-C-ST-10MM-BT-3-PU
 MST-10MM BRUSH TOP CENTER 85D (PU)

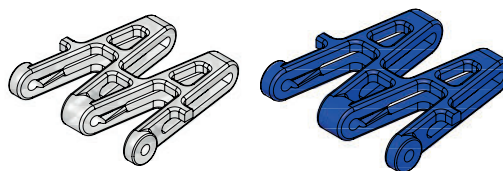


50 MM SUPERTIGHT CHAIN

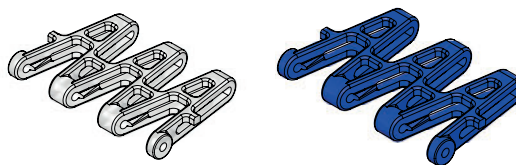
KEY: C = CENTER • LH = LEFT HAND • RH = RIGHT HAND • MSG = MOVING SIDE GUIDE • (PU) = POLYURETHANE • (S) = SANTOPRENE
• (A) = ACETAL • (PP) = POLYPROPYLENE



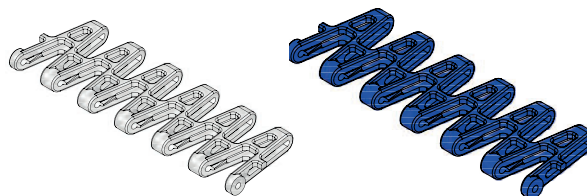
DS0142A | MST-LH PLAIN 50MM SUPERTIGHT (A)
DS0142A-BLUE | MST-LH PLAIN 50MM SUPERTIGHT BLUE (A)
DS0143A | MST-RH PLAIN 50MM SUPERTIGHT (A)
DS0143A-BLUE | MST-RH PLAIN 50MM SUPERTIGHT BLUE (A)



DS0011P-2V | MST-PLAIN CENTER 50MM SUPERTIGHT (PP)
DS0011P-2V-BLUE | MST-PLAIN CENTER 50MM SUPERTIGHT BLUE (PP)



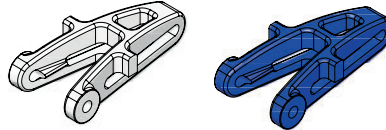
DS0011P-3V | MST-PLAIN CENTER 50MM SUPERTIGHT (PP)
DS0011P-3V-BLUE | MST-PLAIN CENTER 50MM SUPERTIGHT BLUE (PP)



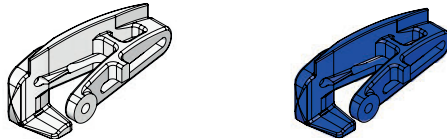
DS0011P | MST-PLAIN CENTER 50MM SUPERTIGHT (PP)
DS0011P-BLUE | MST-PLAIN CENTER 50MM SUPERTIGHT BLUE (PP)

50 MM PILLOWTOP CHAIN

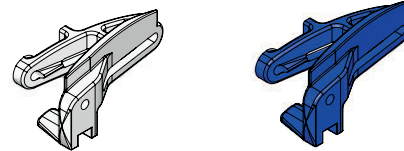
KEY: C = CENTER • LH = LEFT HAND • RH = RIGHT HAND • MSG = MOVING SIDE GUIDE • (PU) = POLYURETHANE • (S) = SANTOPRENE
 • (A) = ACETAL • (PP) = POLYPROPYLENE



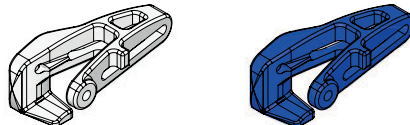
DS0162A-1V
 50MM SUPERTIGHT PILLOW TOP LINK CENTER (A)
DS0162A-1V-BLUE
 50MM SUPERTIGHT PILLOW TOP LINK CENTER BLUE (A)



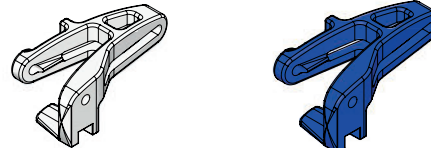
DS0163A-1/2
 50MM SUPERTIGHT PILLOW TOP MSG - 1/2 LEFT (A)
DS0163A-1/2-BLUE
 50MM SUPERTIGHT PILLOW TOP MSG - 1/2 LEFT BLUE (A)



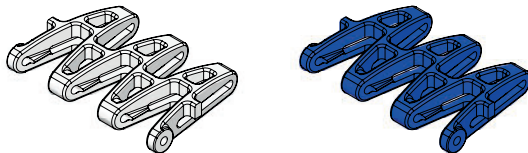
DS0164A-1/2
 50MM SUPERTIGHT PILLOW TOP MSG - 1/2 RIGHT (A)
DS0164A-1/2-BLUE
 50MM SUPERTIGHT PILLOW TOP MSG - 1/2 RIGHT BLUE (A)



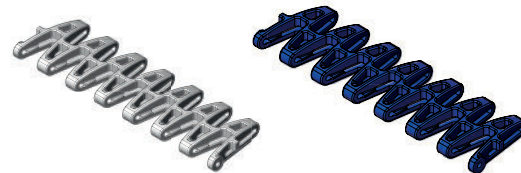
DS0160A-1/2
 50MM SUPERTIGHT PILLOW TOP PLAIN - 1/2 LEFT (A)
DS0160A-1/2-BLUE
 50MM SUPERTIGHT PILLOW TOP PLAIN - 1/2 LEFT BLUE (A)



DS0161A-1/2
 50MM SUPERTIGHT PILLOW TOP PLAIN - 1/2 RIGHT (A)
DS0161A-1/2-BLUE
 50MM SUPERTIGHT PILLOW TOP PLAIN - 1/2 RIGHT BLUE (A)



DS0162A-3V
 50MM SUPERTIGHT PILLOW TOP LINK CENTER (A)
DS0162A-3V-BLUE
 50MM SUPERTIGHT PILLOW TOP LINK CENTER BLUE (A)

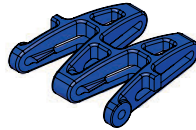
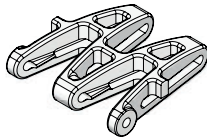


DS0162A
 50MM SUPERTIGHT PILLOW TOP CENTER (A)
DS0162A-BLUE
 50MM SUPERTIGHT PILLOW TOP CENTER BLUE (A)

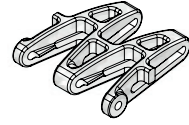
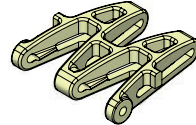


50 MM PILLOWTOP CHAIN

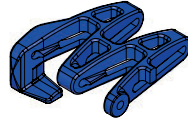
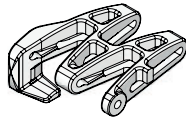
KEY: C = CENTER • LH = LEFT HAND • RH = RIGHT HAND • MSG = MOVING SIDE GUIDE • (PU) = POLYURETHANE • (S) = SANTOPRENE
• (A) = ACETAL • (PP) = POLYPROPYLENE



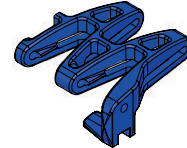
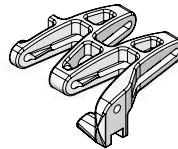
DS0162A-2V
50MM SUPERTIGHT PILLOW TOP LINK CENTER (A)
DS0162A-2V-BLUE
50MM SUPERTIGHT PILLOW TOP LINK CENTER BLUE (A)



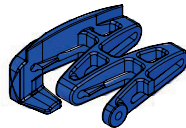
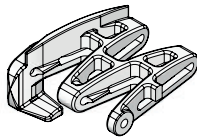
DS0162S-2V
50 MM SUPERTIGHT PILLOW TOP LINK CENTER (S)
DS0162PU-2V
50 MM SUPERTIGHT PILLOW TOP LINK CENTER (PU)



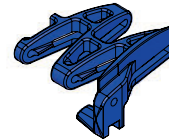
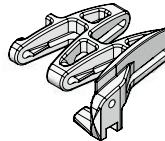
DS0160A
50MM SUPERTIGHT PILLOW TOP LH (A)
DS0160A-BLUE
50MM SUPERTIGHT PILLOW TOP LH - BLUE (A)



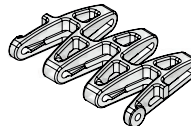
DS0161A
50MM SUPERTIGHT PILLOW TOP RH
DS0161A-BLUE
50MM SUPERTIGHT PILLOW TOP RH - BLUE



DS0163A
50MM SUPERTIGHT PILLOW TOP MSG - LEFT (A)
DS0163A-BLUE
50MM SUPERTIGHT PILLOW TOP MSG - LEFT BLUE (A)



DS0164A
50MM SUPERTIGHT PILLOW TOP MSG - RIGHT (A)
DS0164A-BLUE
50MM SUPERTIGHT PILLOW TOP MSG - RIGHT BLUE (A)



DS0162S-3V
50 MM SUPERTIGHT PILLOW TOP LINK CENTER (S)
DS0162PU-3V
50 MM SUPERTIGHT PILLOW TOP LINK CENTER (PU)

ACCUMULATION OPTIONS

KEY: C = CENTER • LH = LEFT HAND • RH = RIGHT HAND • MSG = MOVING SIDE GUIDE • (PU) = POLYURETHANE • (S) = SANTOPRENE
• (A) = ACETAL • (PP) = POLYPROPYLENE



DS5093-16-XXX
Ø16.0MM
TUBE TOP TUBE
XXX = LENGTH OF TUBE
REFER TO CHAIN DRAWING FOR LENGTH



DS0054-01A
Ø16.0MM
TUBE TOP BEARING
(A) CENTER LINK

OTHER ACCUMULATION OPTIONS:



DS0053P
MUS - 16MM BARREL ROLLER (PP)



DA7000
MUS - SPHERICAL ROLLER
ASSEMBLY

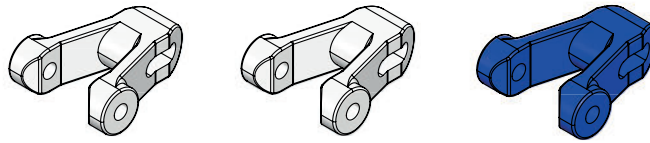


CHAIN TYPES

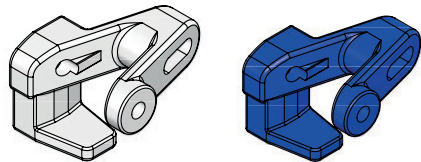
[LEGACY CHAIN]

25 MM MULTISPAN CHAIN

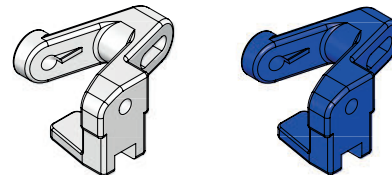
KEY: C = CENTER • LH = LEFT HAND • RH = RIGHT HAND • MSG = MOVING SIDE GUIDE • (PU) = POLYURETHANE • (S) = SANTOPRENE
 • (A) = ACETAL • (PP) = POLYPROPYLENE



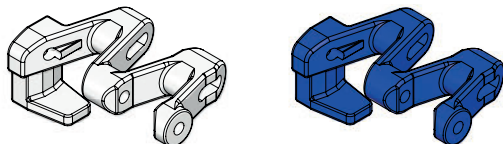
DS0001A | MUS PLAIN CENTER (A)
DS0001P | MUS PLAIN CENTER (PP)
DS0001P-BLUE | MUS - PLAIN BLUE CENTER (PP)



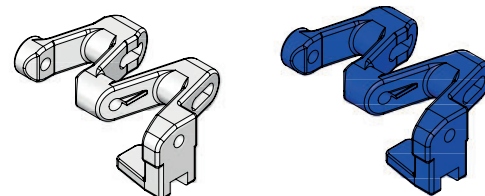
DS0120A | MUS - LH PLAIN (A)
DS0120A-BLUE | MUS - LH PLAIN BLUE (A)



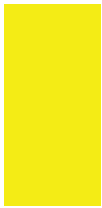
DS0121A | MUS - LH PLAIN (A)
DS0121A-BLUE | MUS - RH PLAIN BLUE (A)



DS0146A | MUS - LH COMBO PLAIN (A)
DS0146A-BLUE | MUS - LH COMBO PLAIN BLUE (A)

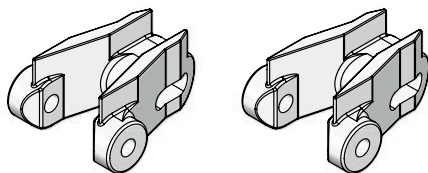


DS0147A | MUS - RH COMBO PLAIN (A)
DS0147A-BLUE | MUS - RH COMBO PLAIN BLUE (A)

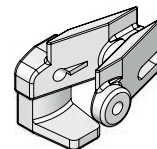


25 MM MULTISPAN CHAIN

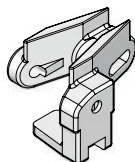
KEY: C = CENTER • LH = LEFT HAND • RH = RIGHT HAND • MSG = MOVING SIDE GUIDE • (PU) = POLYURETHANE • (S) = SANTOPRENE
• (A) = ACETAL • (PP) = POLYPROPYLENE



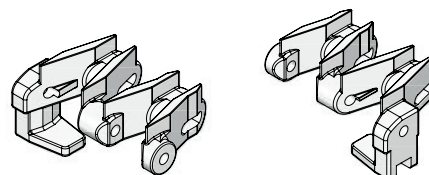
DS0002-01A | MUS - 6MM RAISED CENTER (A)
DS0002P | MUS - 6MM RAISED CENTER (PP)



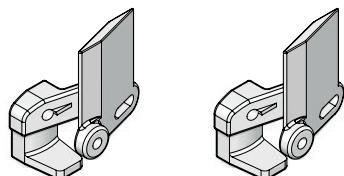
DS0124-01A | MUS - 6MM RAISED LH (A)



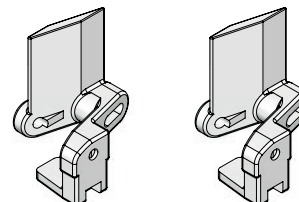
DS0125-01A | MUS - 6MM RAISED RH (A)



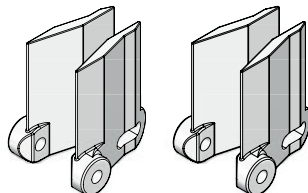
DS0148A | LEFT HAND COMBO 6MM RAISED (A)
DS0149A | RIGHT HAND COMBO 6MM RAISED (A)



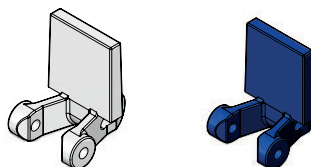
DS0122A | MUS - LH 30MM MSG (A)
DS0122P | MUS - LH 30MM MSG (PP)



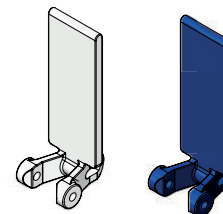
DS0123A | MUS - RH 30MM MSG (A)
DS0123P | MUS - RH 30MM MSG (PP)



DS0003-01-01A
30MM RAISED CLEAT (A) CENTER (A)
DS0003-01-01P
30MM RAISED CLEAT CENTER (PP)



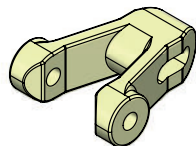
DS0005A
30MM PUSHER CLEAT CENTER (A)
DS0005A-BLUE
30MM PUSHER CLEAT CENTER BLUE (A)



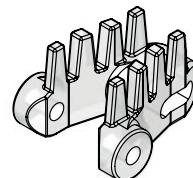
DS0005A-75
75MM PUSHER CLEAT CENTER (A)
DS0005A-75-BLUE
75MM PUSHER CLEAT CENTER BLUE (A)

25 MM MULTISPAN CHAIN

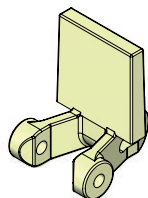
KEY: C = CENTER • LH = LEFT HAND • RH = RIGHT HAND • MSG = MOVING SIDE GUIDE • (PU) = POLYURETHANE • (S) = SANTOPRENE
 • (A) = ACETAL • (PP) = POLYPROPYLENE



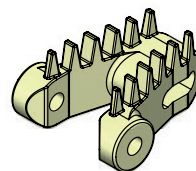
DS0001S55 (55-87)
 MUS-PLAIN CENTER (S)
 55 OR 87 DUROMETER



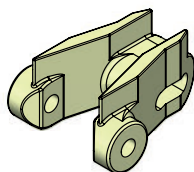
DS0010-BT-PU
 MUS-10MM BRUSH TOP CENTER(PU)
 70 DUROMETER



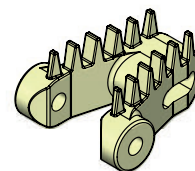
DS0005-(S55-S87)
 MUS-30MM PUSHER CLEAT CENTER (S)
 55 OR 87 DUROMETER



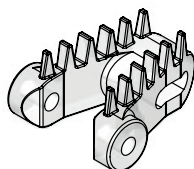
DS0010-BT (55-75)
 MUS-10MM BRUSH TOP CENTER (S)
 55 OR 75 DUROMETER



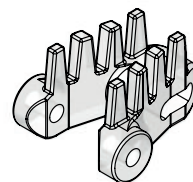
DS0002S-01S (55-87)
 MUS-6MM RAISED TOP CENTER (S)
 55 OR 87 DUROMETER



DS0004-01-BT-55
 MUS-6MM BRUSH TOP CENTER (S)
 55 DUROMETER



DS0004-BT-PU
 MUS-6MM BRUSH TOP CENTER (PU)
 70 DUROMETER

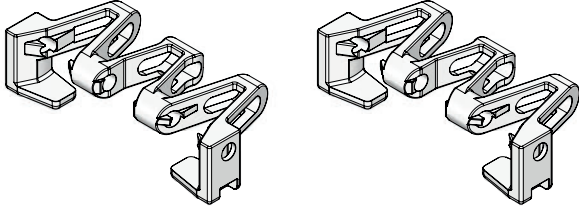


DS0010-BT-PU
 MUS-10MM BRUSH TOP CENTER (PU)
 70 DUROMETER

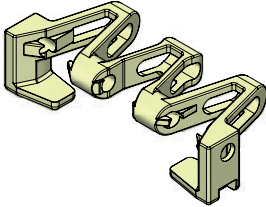


25 MM MONOSPAN CHAIN

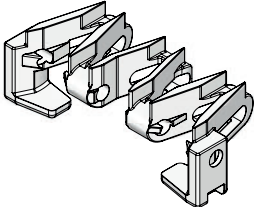
KEY: C = CENTER • LH = LEFT HAND • RH = RIGHT HAND • MSG = MOVING SIDE GUIDE • (PU) = POLYURETHANE • (S) = SANTOPRENE
• (A) = ACETAL • (PP) = POLYPROPYLENE



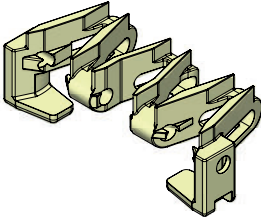
DS0200-01A
MON-PLAIN LINK (A)
DS0200-01P
MON-PLAIN LINK (PP)



DS0200-01S55
MON-PLAIN LINK (S)
55 DUROMETER



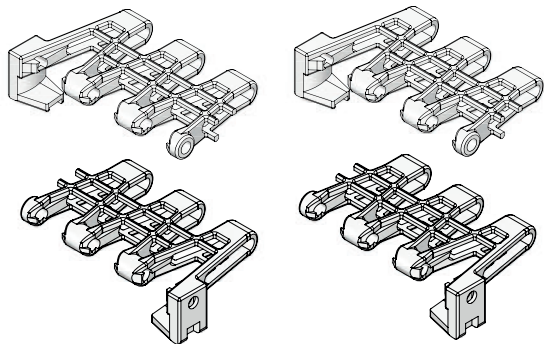
DS0200-03A
MON-6MM RAISED (A)



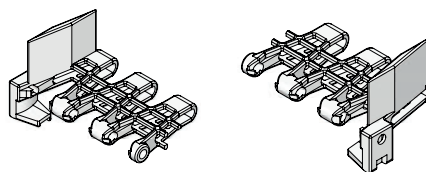
DS0200-03S55
MON-6MM RAISED (S)
55 DUROMETER

50 MM MAXISPAN CHAIN

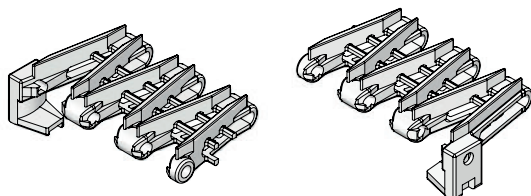
KEY: C = CENTER • LH = LEFT HAND • RH = RIGHT HAND • MSG = MOVING SIDE GUIDE • (PU) = POLYURETHANE • (S) = SANTOPRENE
 • (A) = ACETAL • (PP) = POLYPROPYLENE



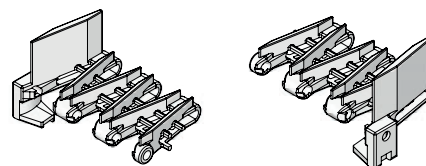
DS5210A - MAX-LH PLAIN (A)
DS5230A - MAX-RH PLAIN (A)
DS5210P - MAX-LH PLAIN (PP)
DS5230P - MAX-RH PLAIN (PP)



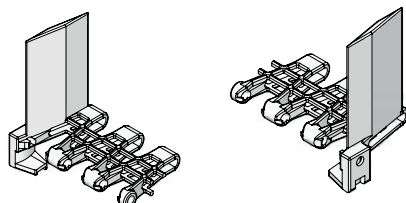
DS5218A - MAX-LH 30MM MSG (A)
DS5238A - MAX-RH 30MM MSG (A)



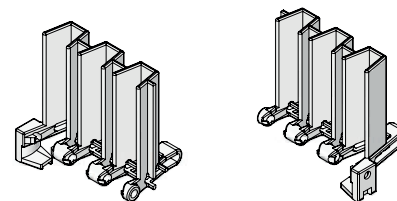
DS5212A - MAX-LH 6MM RAISED (A)
DS5232A - MAX-RH 6MM RAISED (A)



DS5220A - MAX-LH 6MM / 30MM MSG (A)
DS5240A - MAX-VRH 6MM / 30MM MSG (A)



DS5214A - LH 75MM MSG (A)
DS5234A - RH 75MM MSG (A)

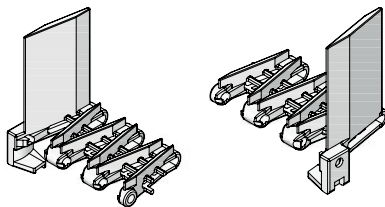


DS5222A - LH 75MM PUSHER CLEAT (A)
DS5242A - RH 75MM PUSHER CLEAT (A)

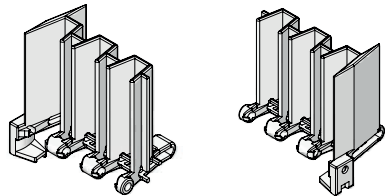


50 MM MAXISPAN CHAIN

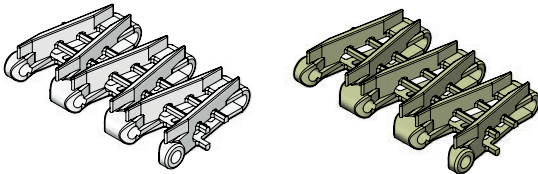
KEY: C = CENTER • LH = LEFT HAND • RH = RIGHT HAND • MSG = MOVING SIDE GUIDE • (PU) = POLYURETHANE • (S) = SANTOPRENE
• (A) = ACETAL • (PP) = POLYPROPYLENE



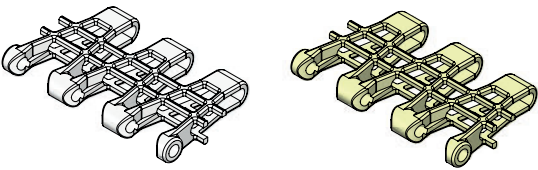
DS5216A - MAX-LH 6MM RAISED / 75MM MSG (A)
DS5236A - MAX-RH 6MM RAISED / 75MM MSG (A)



DS5224A - MAX-LH 75MM PUSHER CLEAT / MSG (A)
DS5244A - MAX-RH 75MM PUSHER CLEAT / MSG (A)



DS5203A - MAX-6MM RAISED CENTER (A)
DS5203S55 - MAX-6MM RAISED CENTER 55D (S)



DS5201A - MAX-PLAIN CENTER (A)
DS5201P - MAX-PLAIN CENTER (PP)
DS5201S55 - MAX-PLAIN CENTER 55D (S)



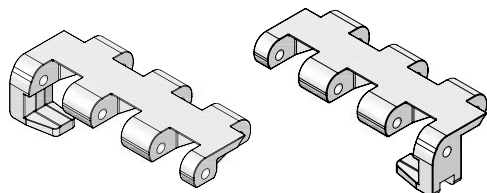
CHAIN TYPES

[SPECIALTY CHAIN]

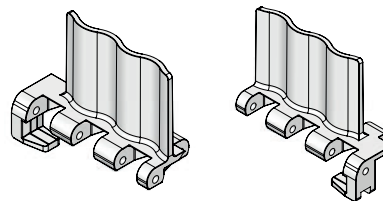


25 MM CLOSED TOP CHAIN

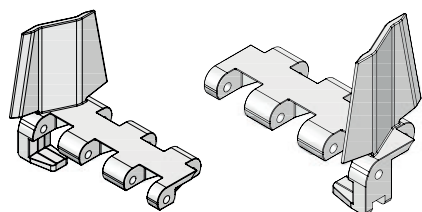
KEY: C = CENTER • LH = LEFT HAND • RH = RIGHT HAND • MSG = MOVING SIDE GUIDE • (PU) = POLYURETHANE • (S) = SANTOPRENE
• (A) = ACETAL • (PP) = POLYPROPYLENE



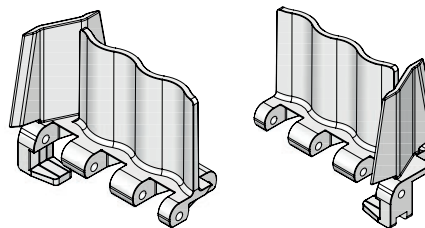
DS0063A - MCT-RH PLAIN (A)
DS0067A - MCT-LH PLAIN (A)



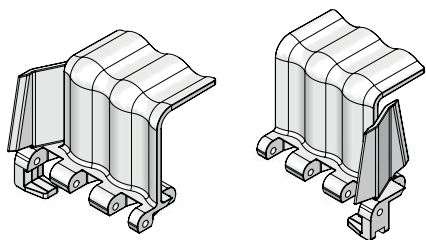
DS0068A - MCT-LH 50MM PUSHER (A)
DS0064A - MCT-RH 50 MM PUSHER (A)



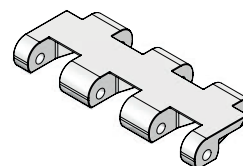
DS0069A - MCT-LH 50MM MSG (A)
DS0065A - MCT-RH 50MM MSG (A)



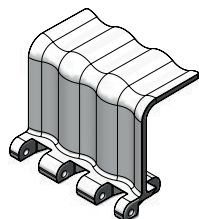
DS0070A - MCT-LH 50MM PUSHER/MSG (A)
DS0066A - MCT-RH 50MM PUSHER/MSG (A)



DS0057A - MCT-LH 50MM SCOOP/MSG (A)
DS0056A - MCT-RH 50MM SCOOP/MSG (A)



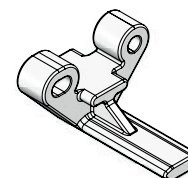
DS0061A - MCT-PLAIN CENTER (A)



DS0058A
MCT-50MM PCENTER SCOOP (A)



DS0060A
MCT-INTERNAL BARREL ROLLER (A)



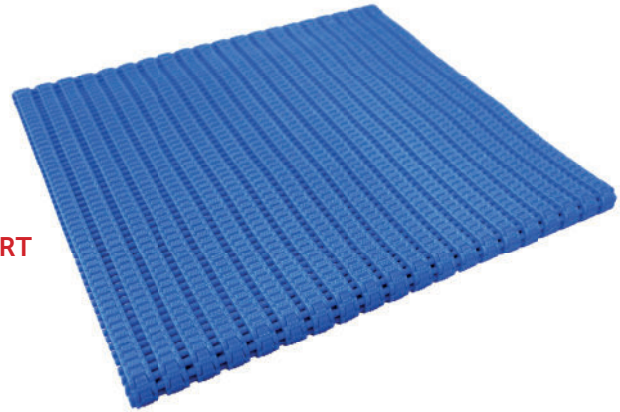
DS9964-CT-01
MCT-RETURN CHAIN SUPPORT TAB (A)

MICROSPAN CHAIN

KEY: C = CENTER • LH = LEFT HAND • RH = RIGHT HAND • MSG = MOVING SIDE GUIDE • (PU) = POLYURETHANE • (S) = SANTOPRENE
 • (A) = ACETAL • (PP) = POLYPROPYLENE

300 MM WIDTH

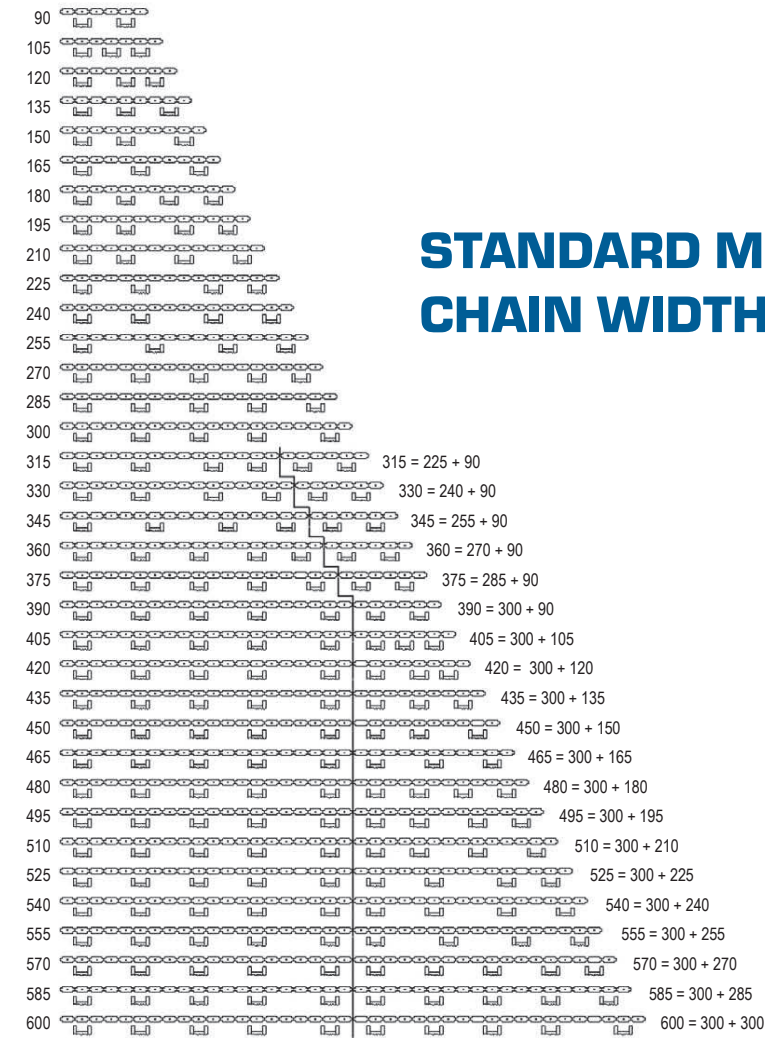
- | | |
|--------------------|------------------------|
| DA6600-2030-BLUE | 4MM PLAIN BLUE |
| DA6600-2050- BLUE | 6MM PLAIN BLUE |
| DA6600-2040-BLUE | 4MM RAISED BLUE |
| DA6600-2060-BLUE | 6MM RAISED BLUE |
| DA6600-2060HF-BLUE | 6MM HIGH FRICTION BLUE |



UNDER 300 MM WIDTH (XX = WIDTH<300MM) SEE CHART

- | | |
|-----------------------|------------------------|
| DA6600-2030-BLUE-XX | 4MM PLAIN BLUE |
| DA6600-2050- BLUE-XX | 6MM PLAIN BLUE |
| DA6600-2040-BLUE-XX | 4MM RAISED BLUE |
| DA6600-2060-BLUE-XX | 6MM RAISED BLUE |
| DA6600-2060HF-BLUE-XX | 6MM HIGH FRICTION BLUE |

MicroSpan
Chain Width



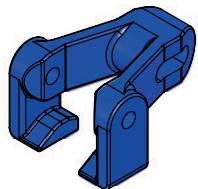
STANDARD MICROSPAN CHAIN WIDTHS

Follow the same pattern as above for larger chain widths.

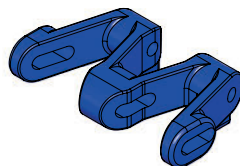


25 MM MINILINK CHAIN

KEY: C = CENTER • LH = LEFT HAND • RH = RIGHT HAND • MSG = MOVING SIDE GUIDE • (PU) = POLYURETHANE • (S) = SANTOPRENE
• (A) = ACETAL • (PP) = POLYPROPYLENE



DS8010-30-06
MIN-30MM PLAIN (A)

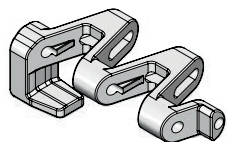


DS8010-60-06
MIN-60MM PLAIN (A)

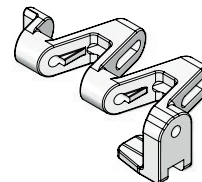
25 MM J-TRAX CHAIN

JTRAX CHAIN ROD

REFER TO CHAIN ROD SECTION FOR
SPECIFIC CHAIN ROD LENGTHS AND TYPES



DS0155-02A
MJT-LEFT HAND JTRAX (A)



DS0156-02A
MJT-RIGHT HAND JTRAX (A)

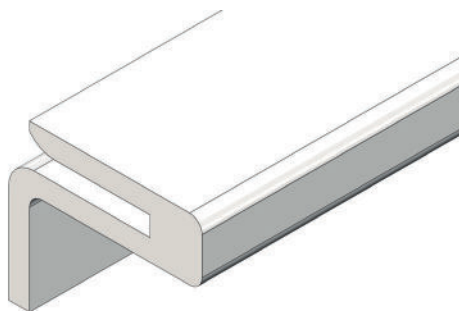


BASIC CONVEYOR COMPONENTS



WEARSTRIP & HARDWARE

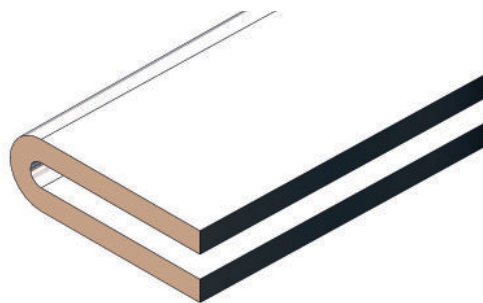
KEY: C = CENTER • LH = LEFT HAND • RH = RIGHT HAND • MSG = MOVING SIDE GUIDE • (PU) = POLYURETHANE • (S) = SANTOPRENE
• (A) = ACETAL • (PP) = POLYPROPYLENE



DS2100 - UHMW WEARSTRIP [12.6 FT STICKS]
DS2100-01 - SPANLON WEARSTRIP [12.6 FT STICKS]



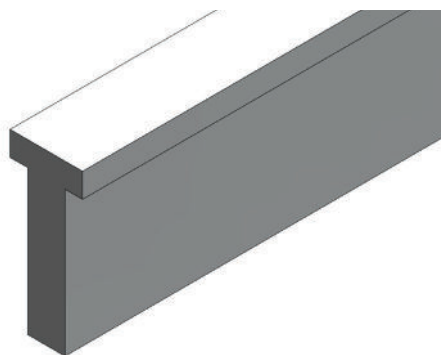
DS2165
NYLON DRIVE RIVET



DS2102 - STAINLESS WEARSTRIP [4 FT STICKS]
DS2105 - MILD STEEL WEARSTRIP [4 FT STICKS]



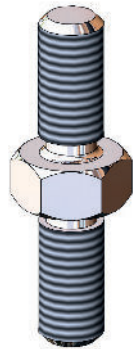
FBE10001
10-32 X .50 NYLON HEX HEAD SLOTTED



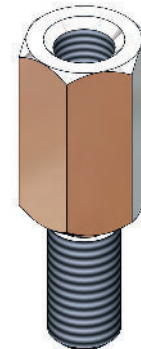
DS2135
UHMW CENTER SUPPORT T-RAIL [BY FOOT]

CONVEYOR SPECIALTY MOUNTING HARDWARE

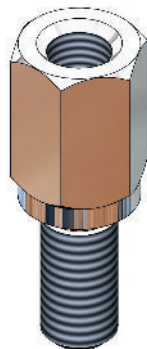
KEY: C = CENTER • LH = LEFT HAND • RH = RIGHT HAND • MSG = MOVING SIDE GUIDE • (PU) = POLYURETHANE • (S) = SANTOPRENE
• (A) = ACETAL • (PP) = POLYPROPYLENE



DS3355LSM
STANDOFF M8X18X21 MALE/MALE



DS3355M
STANDOFF M8X18X22 MALE/FEMALE



DS3355M-19
STANDOFF M8X18X19 MALE/FEMALE



DS3355M-43M
STANDOFF 43MM FEMALE

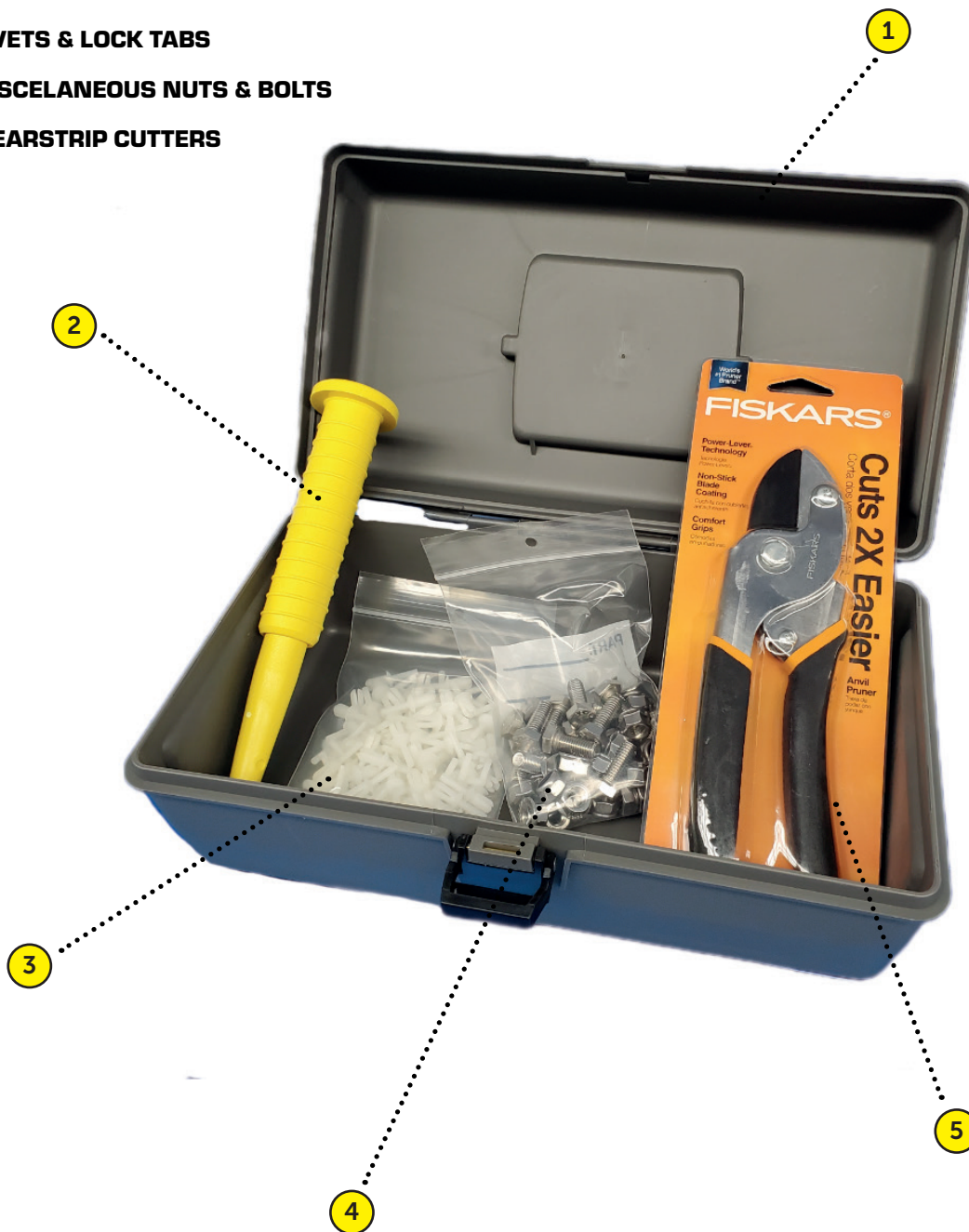


MAINTENANCE KIT [DA3500-M-K-01-M]

KEY: C = CENTER • LH = LEFT HAND • RH = RIGHT HAND • MSG = MOVING SIDE GUIDE • (PU) = POLYURETHANE • (S) = SANTOPRENE
• (A) = ACETAL • (PP) = POLYPROPYLENE

**MUST BE PURCHASED AS FULL KIT.
KIT INCLUDES THE FOLLOWING ITEMS.**

- 1. PLASTIC TOOL BOX**
- 2. RIVET INSERTION TOOL**
- 3. RIVETS & LOCK TABS**
- 4. MISCELANEOUS NUTS & BOLTS**
- 5. WEARSTRIP CUTTERS**



SPAN LUBE [DS000]

KEY: C = CENTER • LH = LEFT HAND • RH = RIGHT HAND • MSG = MOVING SIDE GUIDE • (PU) = POLYURETHANE • (S) = SANTOPRENE
• (A) = ACETAL • (PP) = POLYPROPYLENE



SPANLUBE WITH BOTTLE AND SPOUT CAP
DS0000



DRIVES & IDLERS

[FULL ASSEMBLIES]

25MM STANDARD DRIVE & IDLER

KEY: C = CENTER • LH = LEFT HAND • RH = RIGHT HAND • MSG = MOVING SIDE GUIDE • (PU) = POLYURETHANE • (S) = SANTOPRENE
• (A) = ACETAL • (PP) = POLYPROPYLENE

1. SHAFT SHIELD
DS4039S87

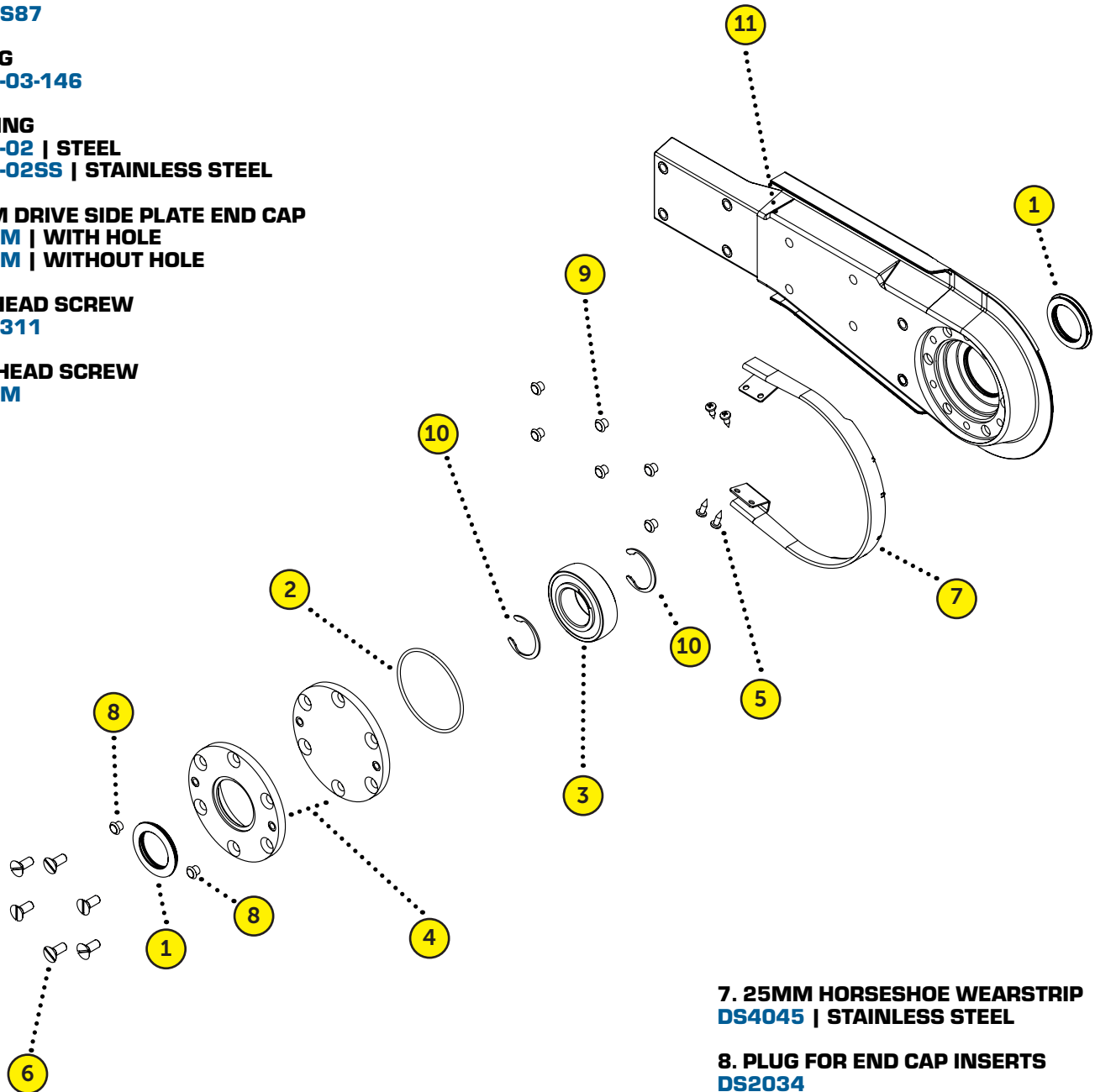
2. O-RING
DS9045-03-146

3. BEARING
DS4251-02 | STEEL
DS4251-02SS | STAINLESS STEEL

4. 25MM DRIVE SIDE PLATE END CAP
DS4134M | WITH HOLE
DS4133M | WITHOUT HOLE

5. PAN HEAD SCREW
92325A311

6. FLAT HEAD SCREW
DS9358M



7. 25MM HORSESHOE WEARSTRIP
DS4045 | STAINLESS STEEL

8. PLUG FOR END CAP INSERTS
DS2034

9. PLUG
DS2035

10. DRIVE SHAFT CRESCENT RING
DS9040-2000-125

11. PLASTIC DRIVE SIDE PLATE
DS4131M | LEFT SIDE
DS4132M | RIGHT SIDE



50MM STANDARD DRIVE & IDLER

KEY: C = CENTER • LH = LEFT HAND • RH = RIGHT HAND • MSG = MOVING SIDE GUIDE • (PU) = POLYURETHANE • (S) = SANTOPRENE
• (A) = ACETAL • (PP) = POLYPROPYLENE

1. SHAFT SHIELD
DS4039S87

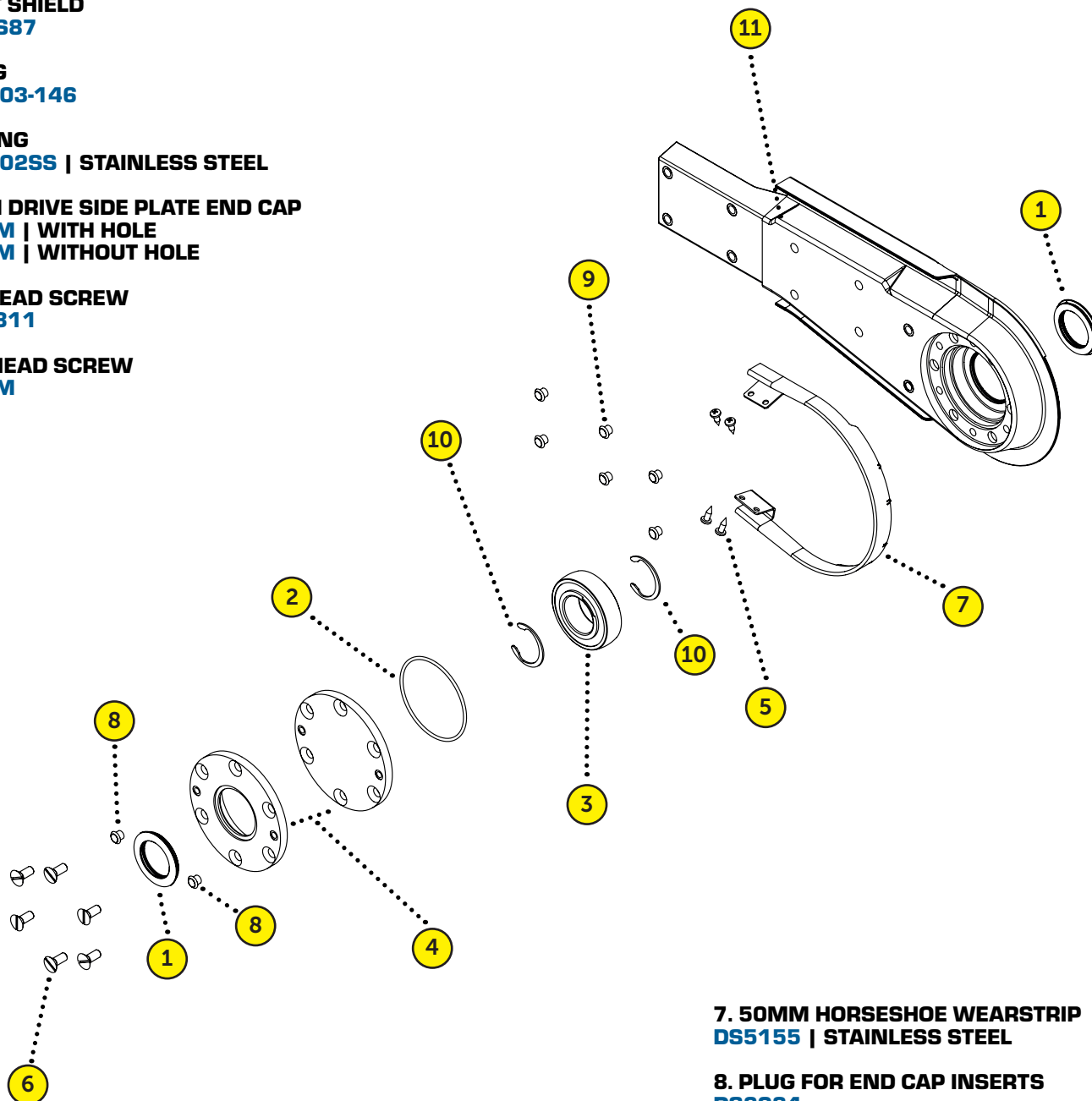
2. O-RING
DS9045-03-146

3. BEARING
DS4251-02SS | STAINLESS STEEL

4. 50MM DRIVE SIDE PLATE END CAP
DS4134M | WITH HOLE
DS4133M | WITHOUT HOLE

5. PAN HEAD SCREW
92325A311

6. FLAT HEAD SCREW
DS9358M



7. 50MM HORSESHOE WEARSTRIP
DS5155 | STAINLESS STEEL

8. PLUG FOR END CAP INSERTS
DS2034

9. PLUG
DS2035

10. DRIVE SHAFT CRESCENT RING
DS9040-2000-125

11. PLASTIC DRIVE SIDE PLATE
DS4035M | LEFT SIDE
DS4036M | RIGHT SIDE

MINILINK IDLER KIT

KEY: C = CENTER • LH = LEFT HAND • RH = RIGHT HAND • MSG = MOVING SIDE GUIDE • (PU) = POLYURETHANE • (S) = SANTOPRENE
 • (A) = ACETAL • (PP) = POLYPROPYLENE

1. MINILINK SPROCKET STANDARD HALF
DS8012-1.00-10

2. #4-18X 1/2" SL-PMSMS S.S.
DS9301

3. MINILINK CHAIN ROD
DS8011

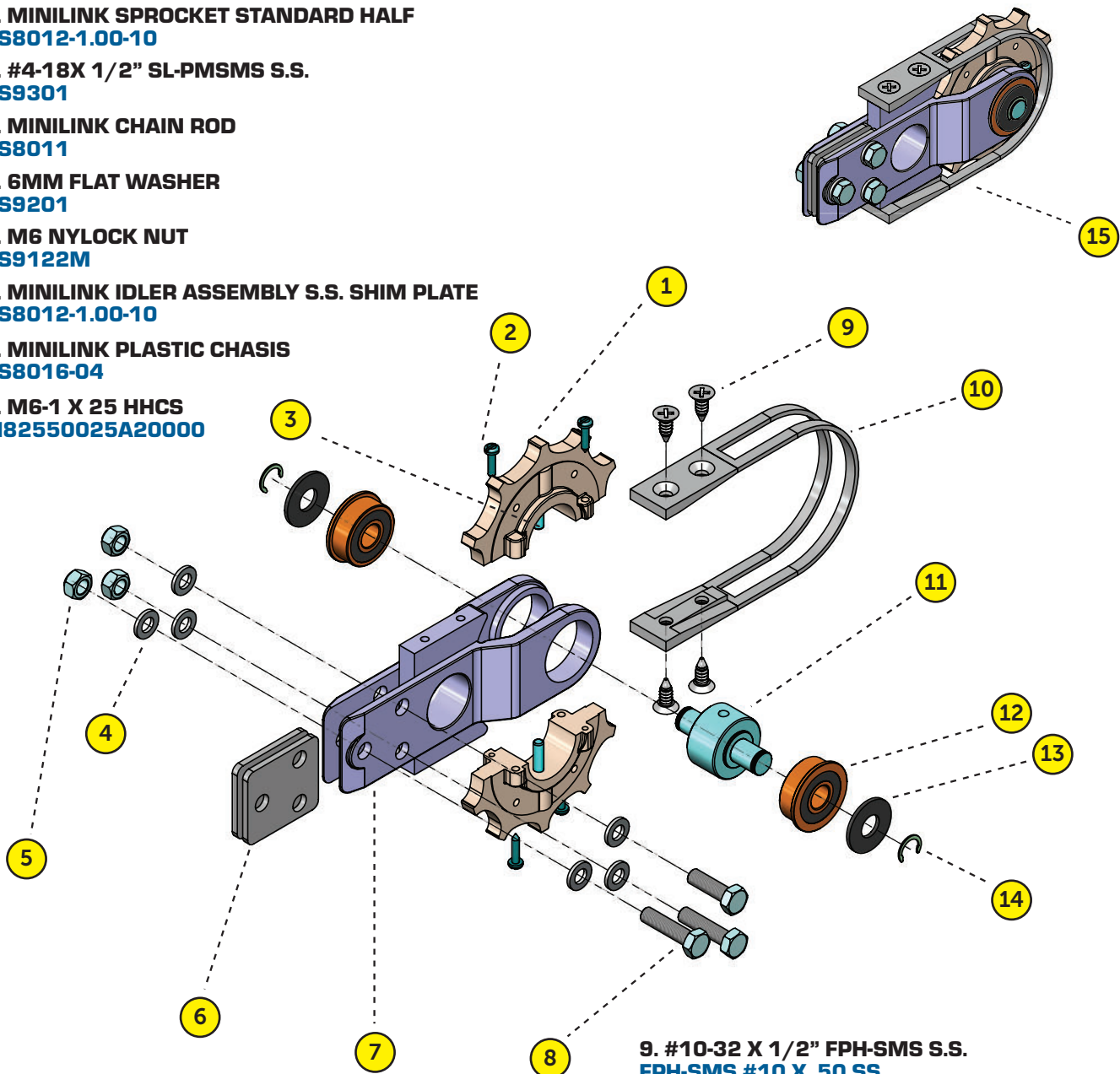
4. 6MM FLAT WASHER
DS9201

5. M6 NYLOCK NUT
DS9122M

6. MINILINK IDLER ASSEMBLY S.S. SHIM PLATE
DS8012-1.00-10

7. MINILINK PLASTIC CHASIS
DS8016-04

8. M6-1 X 25 HHCS
M82550025A20000



9. #10-32 X 1/2" FPH-SMS S.S.
FPH-SMS #10 X .50 SS

10. SS MINILINK CHAIN GUIDE STRAP
DS8089

11. MINILINK IDLER SHAFT
DS8033

12. MINILINK IDLER BEARING ASSEMBLY
DA8063

13. .385" I.D. X 1.0" O.D. X .062" T PVC WASHER
5619-58-62

14. 3/8" EXTERNAL CRESCENT RING SS
DS9040-C-37SS

15. MINILINK STANDARD IDLER | FULL ASSEMBLY
DA8016



LOW PROFILE IDLER

KEY: C = CENTER • LH = LEFT HAND • RH = RIGHT HAND • MSG = MOVING SIDE GUIDE • (PU) = POLYURETHANE • (S) = SANTOPRENE
• (A) = ACETAL • (PP) = POLYPROPYLENE

1. LOW PROFILE IDLER SIDE PLATE

RIGHT - DS4332M

LEFT - DS4331M

2. LOW PROFILE IDLER SHAFT

DS4333-0613XR00

3. LOW PROFILE IDLER HORSESHOE

CAST ALUMINUM PLATED - DS4345-P

MOLDED - DS4345-M

MACHINED - DS4345-MACH

4. M8-1.25 X 40 HHCS SS

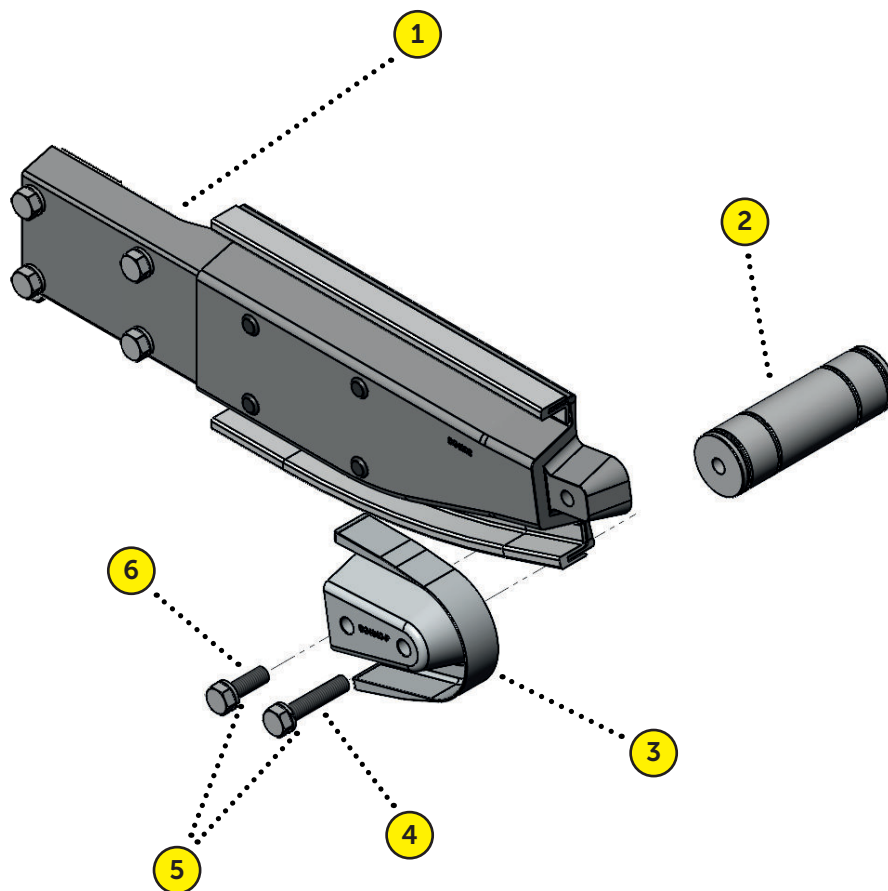
69575

5. 8MM LOCK WASHER

DS9103M

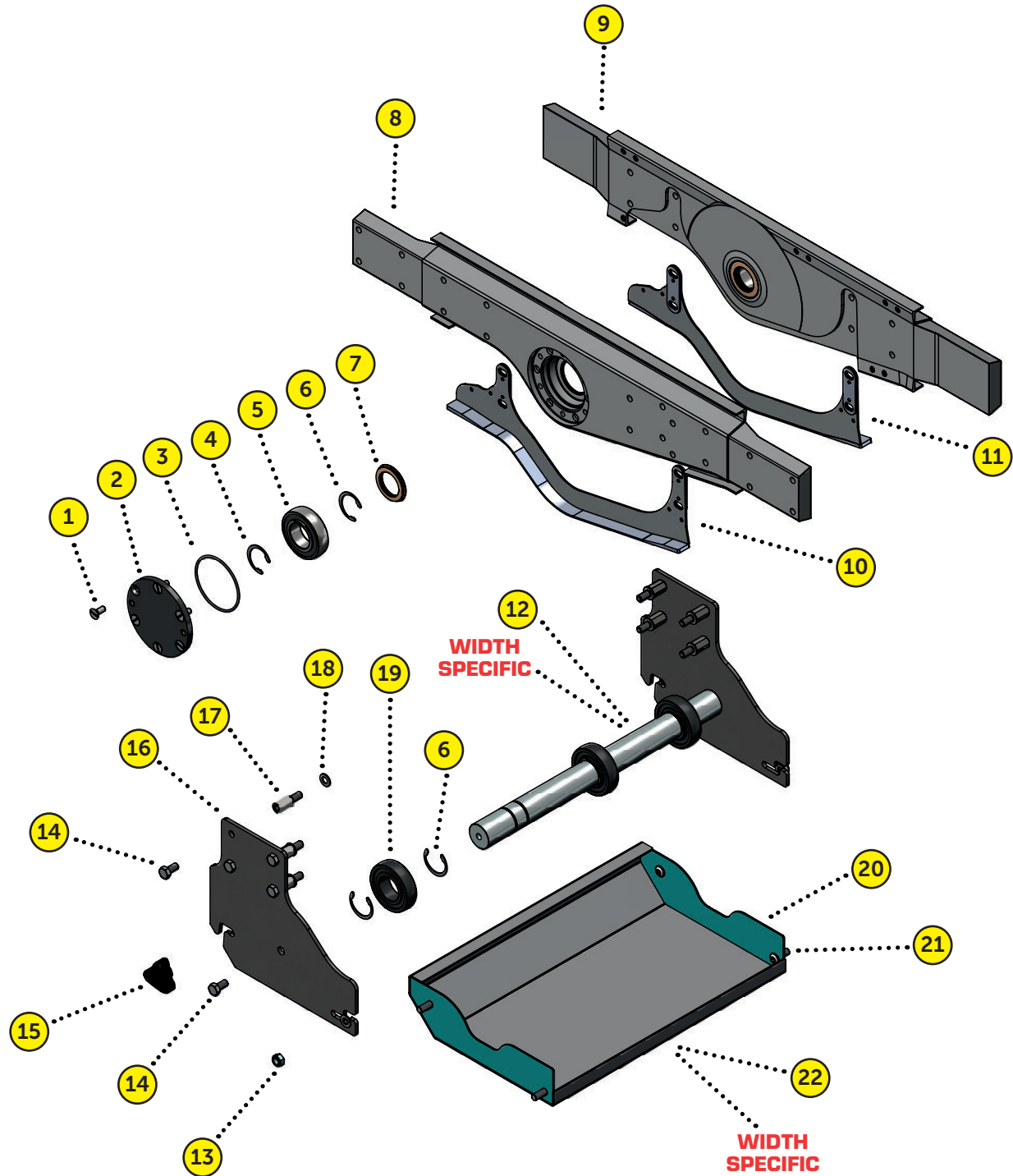
6. M8-1.25 X 25 HHCS SS

DS9405M



INTERMEDIATE DRIVE COMPONENTS

KEY: C = CENTER • LH = LEFT HAND • RH = RIGHT HAND • MSG = MOVING SIDE GUIDE • (PU) = POLYURETHANE • (S) = SANTOPRENE
• (A) = ACETAL • (PP) = POLYPROPYLENE



INTERMEDIATE DRIVE COMPONENTS

KEY: C = CENTER • LH = LEFT HAND • RH = RIGHT HAND • MSG = MOVING SIDE GUIDE • (PU) = POLYURETHANE • (S) = SANTOPRENE
• (A) = ACETAL • (PP) = POLYPROPYLENE

**1. 1/4-20 X 5/8" FHCS
FEC5001**

**2. END CAP CLOSED
DS4133**

**3. O-RING
DS9045-03-146**

**4. 1 1/4" DIA. SHAFT CRESCENT RING
DS9040-2000-125**

**5. 1-1/4 BEARING
STEEL - DS4251-02
STAINLESS STEEL - DS4251-02SS**

**6. 1 1/4" DIA. SHAFT CRESCENT RING
DS9040-2000-125**

**7. SANTOPRENE SEAL
DS4039S87**

**8. INTERMEDIATE DRIVE LEFT HAND SIDEPLATE
DAI4245L**

**9. INTERMEDIATE DRIVE RIGHT HAND SIDEPLATE
DAI4245R**

**10. CHAIN GUIDE ASSEMBLY (LEFT)
INCLUDED WITH LEFT HAND SIDE PLATE**

**11. CHAIN GUIDE ASSEMBLY (RIGHT)
INCLUDED WITH RIGHT HAND SIDE PLATE**

**12. INTERMEDIATE DRIVE SHAFT
DS4239M-CWXR00 (CW=CHAIN WIDTH)**

**13. M8 NYLOCK NUT
DS9120-02M**

**14. M8-1.25 X 13 HHCS
DS9402M**

**15. KNOB 3 PRONG M8 FEMALE THREADS
2776K640**

**16. MID MOUNTING PLATE
DS4236-R01**

**17. STANDOFF - 21MM STAINLESS MALE/FEMALE
DS3355M**

**18. 8MM FLAT WASHER
DS9200**

**19. 1-1/4 PLASTIC BEARING
DS4251PL**

**20. MID GUARD SIDEPLATE
DS4238**

**21. M8-1.25 X 20 BHCS
DSMB2580020A20000**

**22. MID GUARD BODY
DSDS4237-CW (CW=CHAIN WIDTH)**



DRIVES & IDLERS

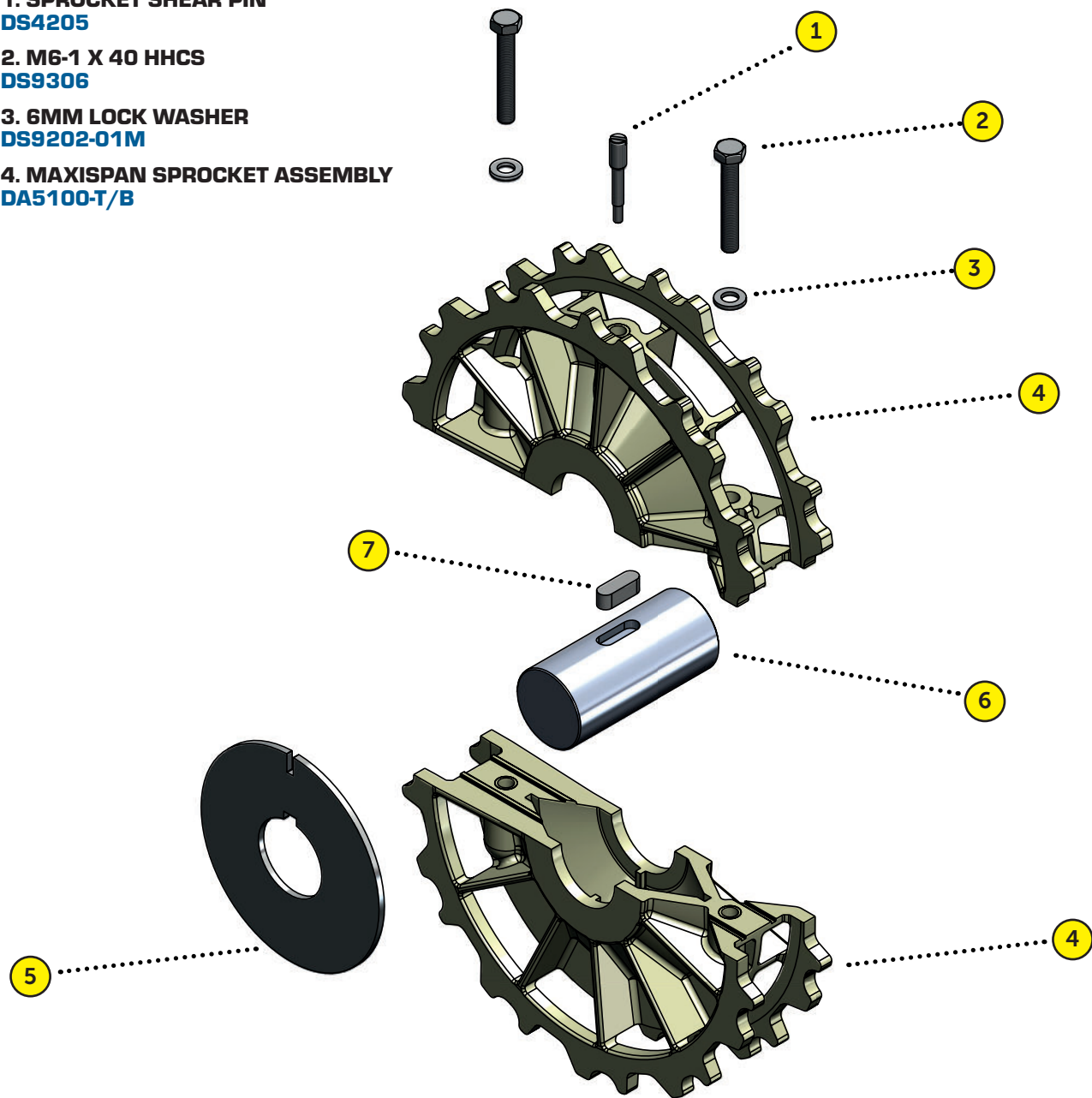
[SHAFTS & SPROCKETS]



MAXISPAN 50 MM SPROCKET ASSEMBLY

KEY: C = CENTER • LH = LEFT HAND • RH = RIGHT HAND • MSG = MOVING SIDE GUIDE • (PU) = POLYURETHANE • (S) = SANTOPRENE
• (A) = ACETAL • (PP) = POLYPROPYLENE

- 1. SPROCKET SHEAR PIN**
DS4205
- 2. M6-1 X 40 HHCS**
DS9306
- 3. 6MM LOCK WASHER**
DS9202-01M
- 4. MAXISPAN SPROCKET ASSEMBLY**
DA5100-T/B



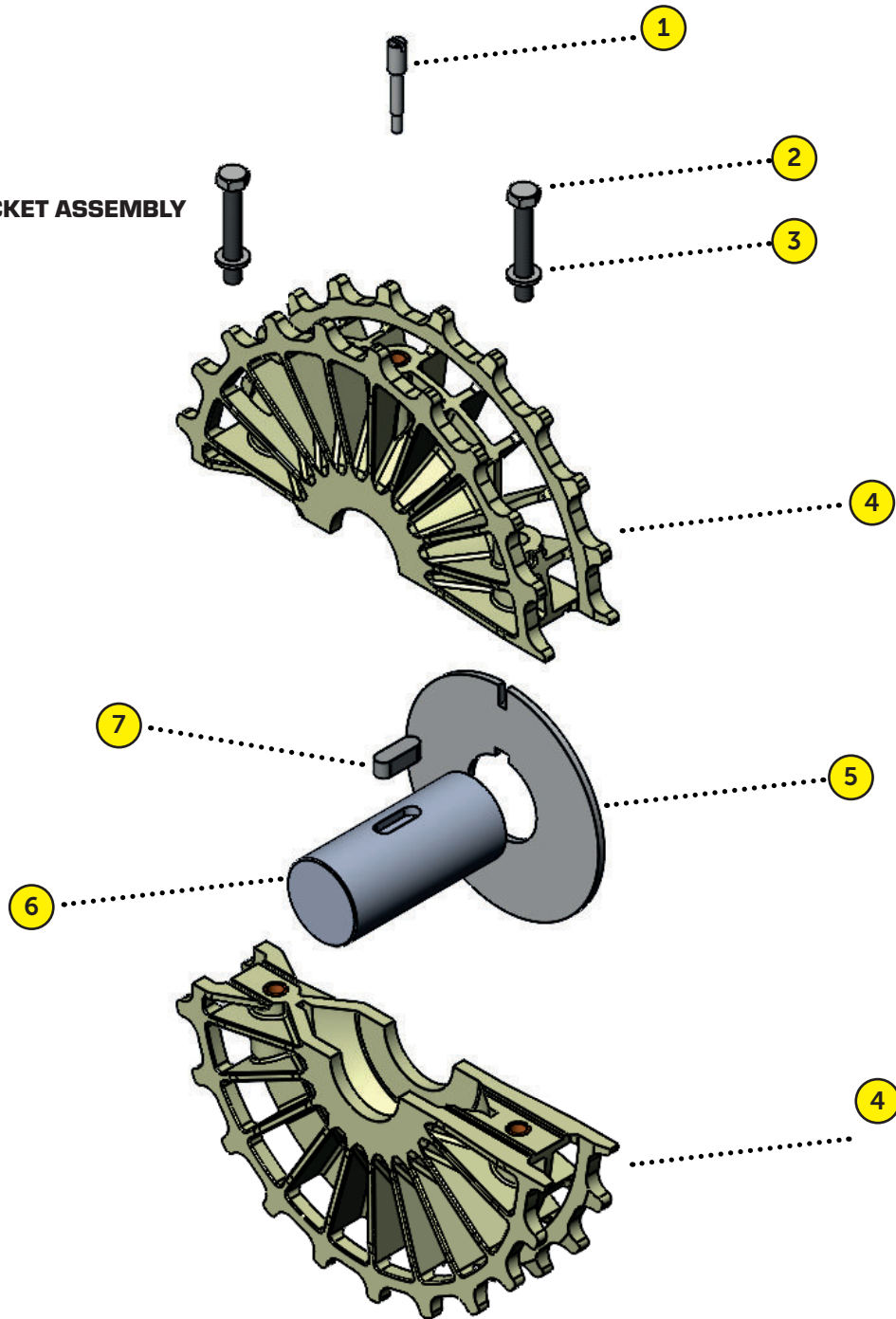
- 5. SPROCKET REINFORCEMENT PLATE**
DS4203-03
- 6. SPROCKET SHAFT**
DEPENDENT ON CHAIN WIDTH
- 7. 1/4 X 1/4 X 3/4 KEY**
DS9170-250-750-01

FULL ASSEMBLY | DA5100-01
[FULL ASSEMBLY DOES NOT INCLUDE SHAFT]

MULTISPAN SUPERTIGHT 25MM SPROCKET ASSEMBLY

KEY: C = CENTER • LH = LEFT HAND • RH = RIGHT HAND • MSG = MOVING SIDE GUIDE • (PU) = POLYURETHANE • (S) = SANTOPRENE
• (A) = ACETAL • (PP) = POLYPROPYLENE

- 1. SPROCKET SHEAR PIN
DS4205
- 2. M6-1 X 40 HHCS
DS9306
- 3. 6MM LOCK WASHER
DS9202-01M
- 4. 25MM MULTISPAN SPROCKET ASSEMBLY
DA4201-T/B



- 5. SPROCKET REINFORCEMENT PLATE
DS4203-03
- 6. SPROCKET SHAFT
DEPENDENT ON CHAIN WIDTH
- 7. 1/4 X 1/4 X 3/4 KEY
DS9170-250-750-01

FULL ASSEMBLY | DA4201-01
[FULL ASSEMBLY DOES NOT INCLUDE SHAFT]



MULTISPAN SUPERTIGHT 50MM SPROCKET ASSEMBLY

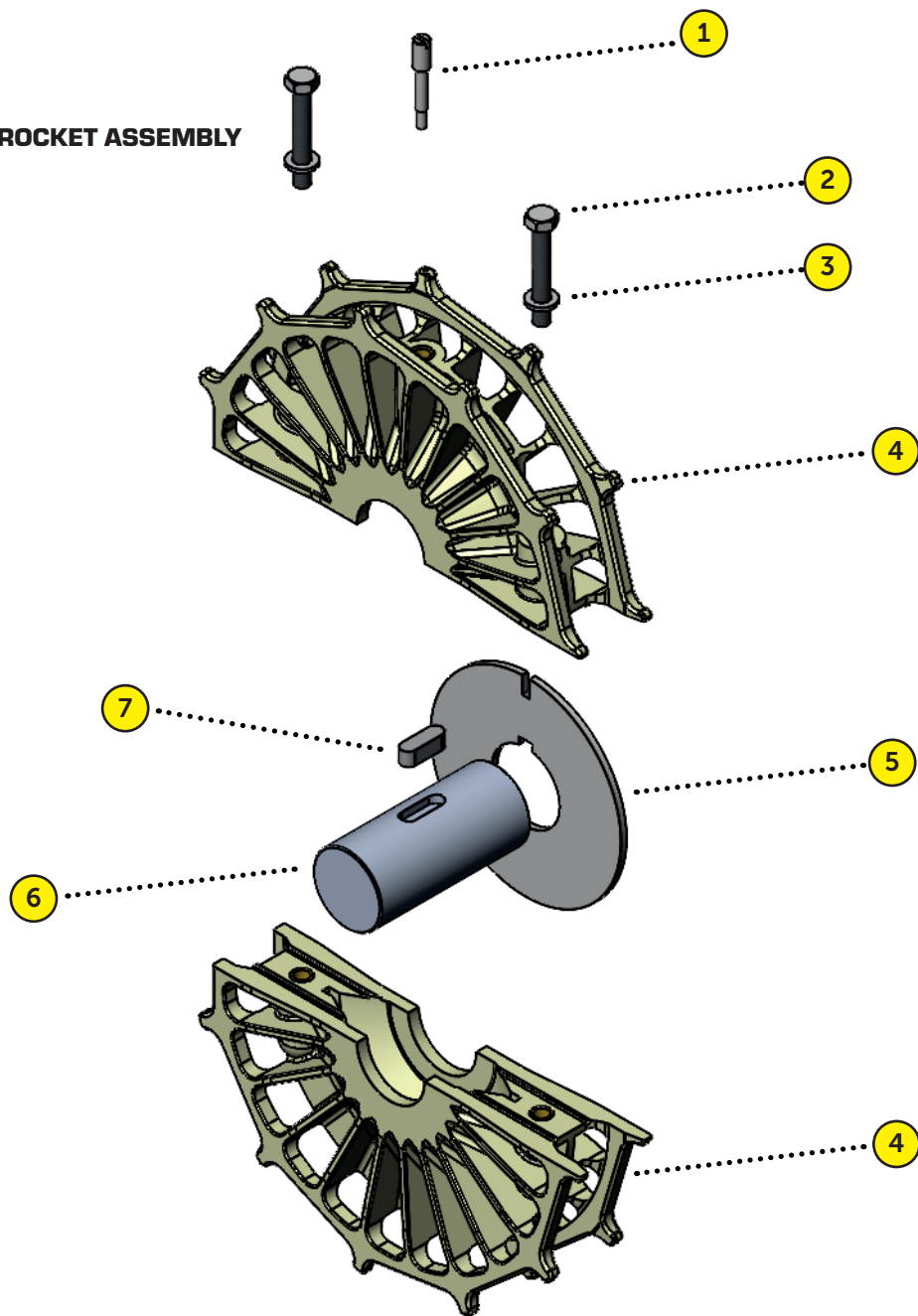
KEY: C = CENTER • LH = LEFT HAND • RH = RIGHT HAND • MSG = MOVING SIDE GUIDE • (PU) = POLYURETHANE • (S) = SANTOPRENE
• (A) = ACETAL • (PP) = POLYPROPYLENE

1. SPROCKET SHEAR PIN
DS4205

2. M6-1 X 40 HHCS
DS9306

3. 6MM LOCK WASHER
DS9202-01M

4. 50MM MULTISPAN SPROCKET ASSEMBLY
DA4202-T/B



5. SPROCKET REINFORCEMENT PLATE
DS4203-03

6. SPROCKET SHAFT
DEPENDENT ON CHAIN WIDTH

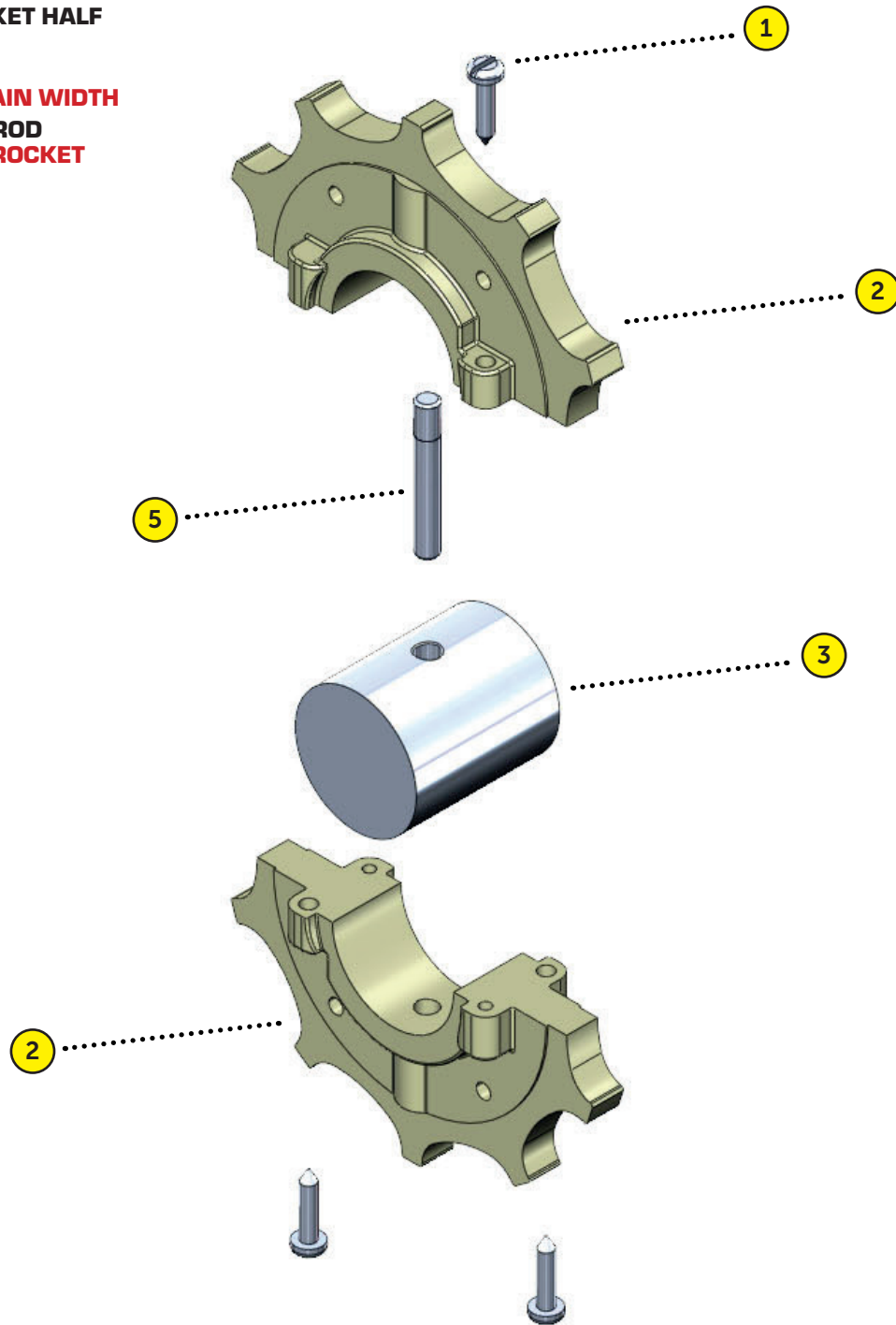
7. 1/4 X 1/4 X 3/4 KEY
DS9170-250-750-01

FULL ASSEMBLY | DA4202-01
[FULL ASSEMBLY DOES NOT INCLUDE SHAFT]

MINILINK 25MM SPROCKET ASSEMBLY

KEY: C = CENTER • LH = LEFT HAND • RH = RIGHT HAND • MSG = MOVING SIDE GUIDE • (PU) = POLYURETHANE • (S) = SANTOPRENE
• (A) = ACETAL • (PP) = POLYPROPYLENE

- 1. 4-18 X 0.50 SL-PHSMS SS
DS9301
- 2. MINILINK SPROCKET HALF
DS8012-100
- 3. SPROCKET SHAFT
DEPENDENT ON CHAIN WIDTH
- 5. MINILINK CHAIN ROD
INCLUDED WITH SPROCKET



FULL ASSEMBLY | DA8012-1.00-11
[FULL ASSEMBLY DOES NOT INCLUDE SHAFT]



MICROSPAN 1.25" BORE SPROCKET ASSEMBLY

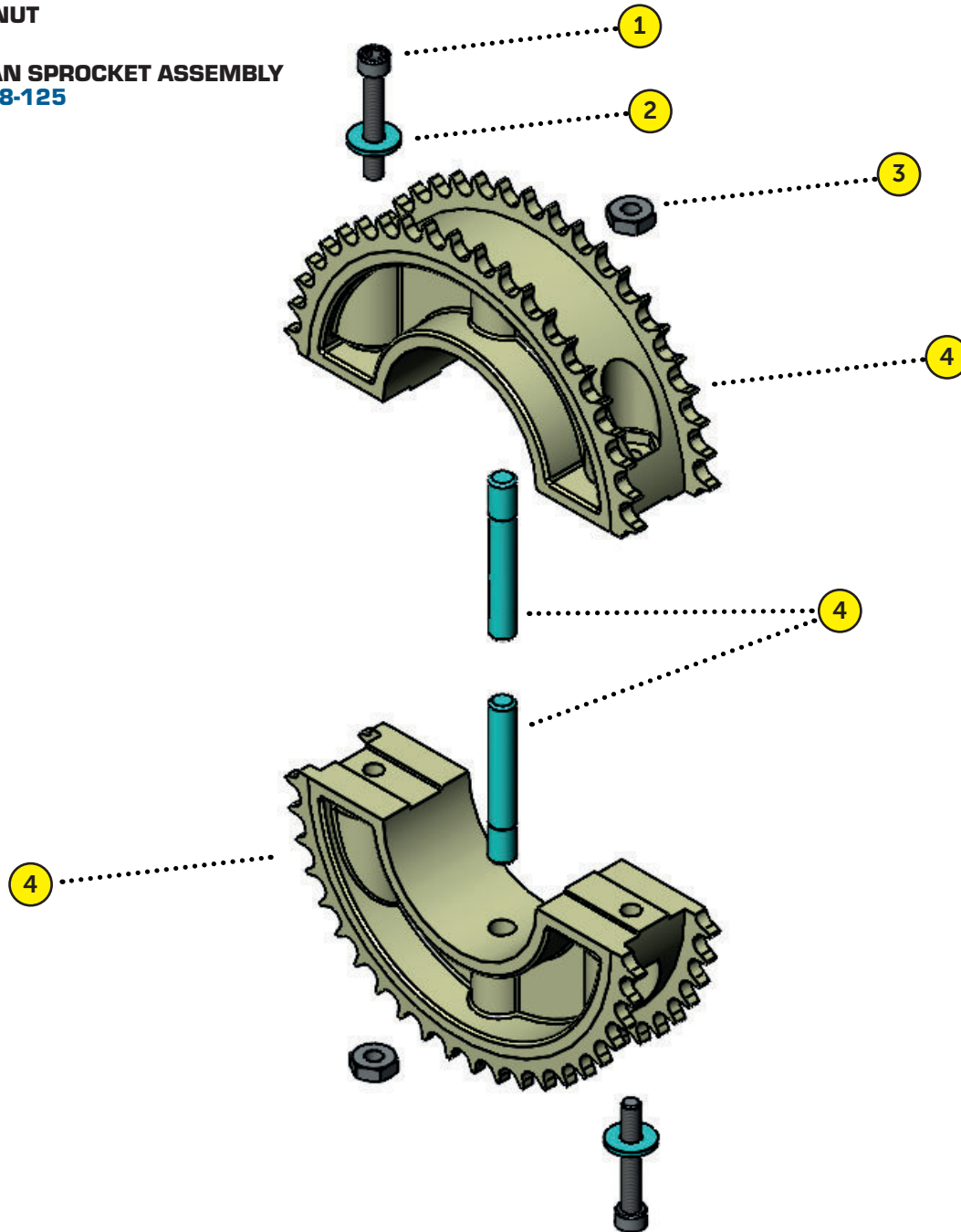
KEY: C = CENTER • LH = LEFT HAND • RH = RIGHT HAND • MSG = MOVING SIDE GUIDE • (PU) = POLYURETHANE • (S) = SANTOPRENE
• (A) = ACETAL • (PP) = POLYPROPYLENE

1. 4-40 X 0.75 SHCS SS
933153

2. #4 FLAT WASHER
DS9098

3. 4-40 HEX NUT
DS9119

4. MICROSPAN SPROCKET ASSEMBLY
DB6600-2008-125

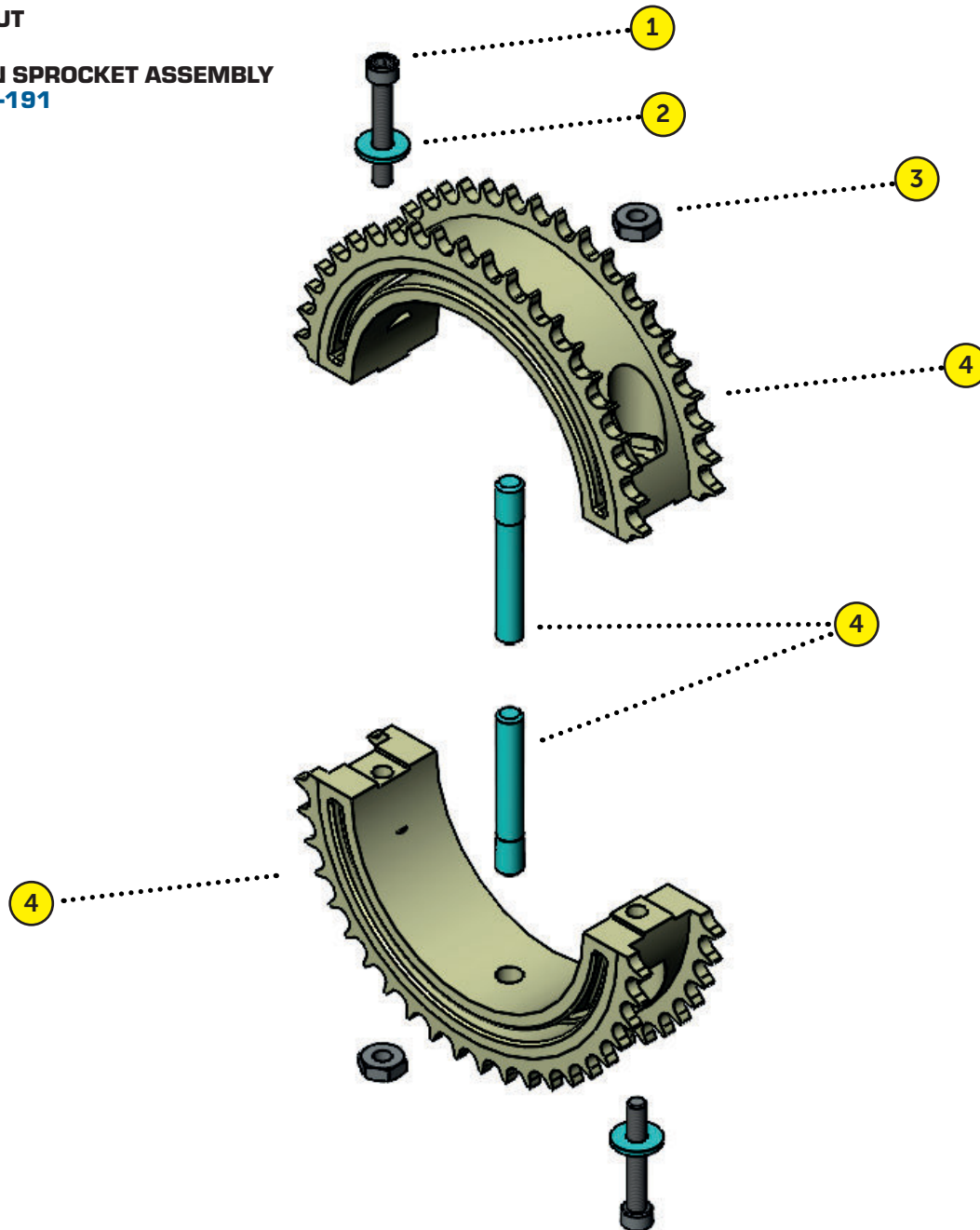


FULL ASSEMBLY | DA6600-2008-125
[FULL ASSEMBLY DOES NOT INCLUDE SHAFT]

MICROSPAN 1.91" BORE SPROCKET ASSEMBLY

KEY: C = CENTER • LH = LEFT HAND • RH = RIGHT HAND • MSG = MOVING SIDE GUIDE • (PU) = POLYURETHANE • (S) = SANTOPRENE
• (A) = ACETAL • (PP) = POLYPROPYLENE

- 1. 4-40 X 0.75 SHCS SS
933153
- 2. #4 FLAT WASHER
DS9098
- 3. 4-40 HEX NUT
DS9119
- 4. MICROSPAN SPROCKET ASSEMBLY
DB6600-2008-191



FULL ASSEMBLY | DA6600-2008-191
[FULL ASSEMBLY DOES NOT INCLUDE SHAFT]



MOLDED MICROSPAN 20MM BORE SPROCKET ASSEMBLY

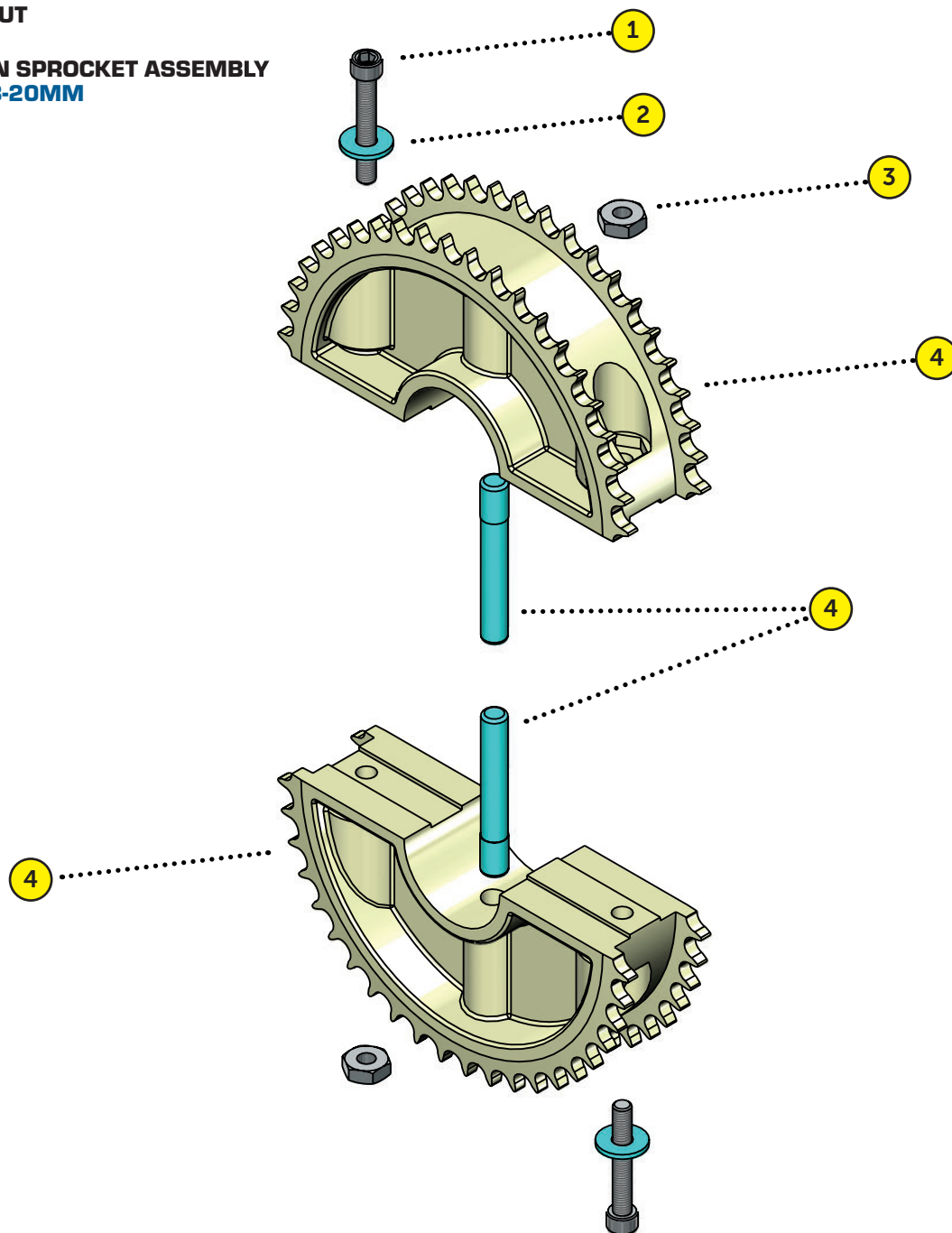
KEY: C = CENTER • LH = LEFT HAND • RH = RIGHT HAND • MSG = MOVING SIDE GUIDE • (PU) = POLYURETHANE • (S) = SANTOPRENE
• (A) = ACETAL • (PP) = POLYPROPYLENE

**1. 4-40 X 0.75 SHCS SS
933153**

**2. #4 FLAT WASHER
DS9098**

**3. 4-40 HEX NUT
DS9119**

**4. MICROSPAN SPROCKET ASSEMBLY
DB6600-2008-20MM**

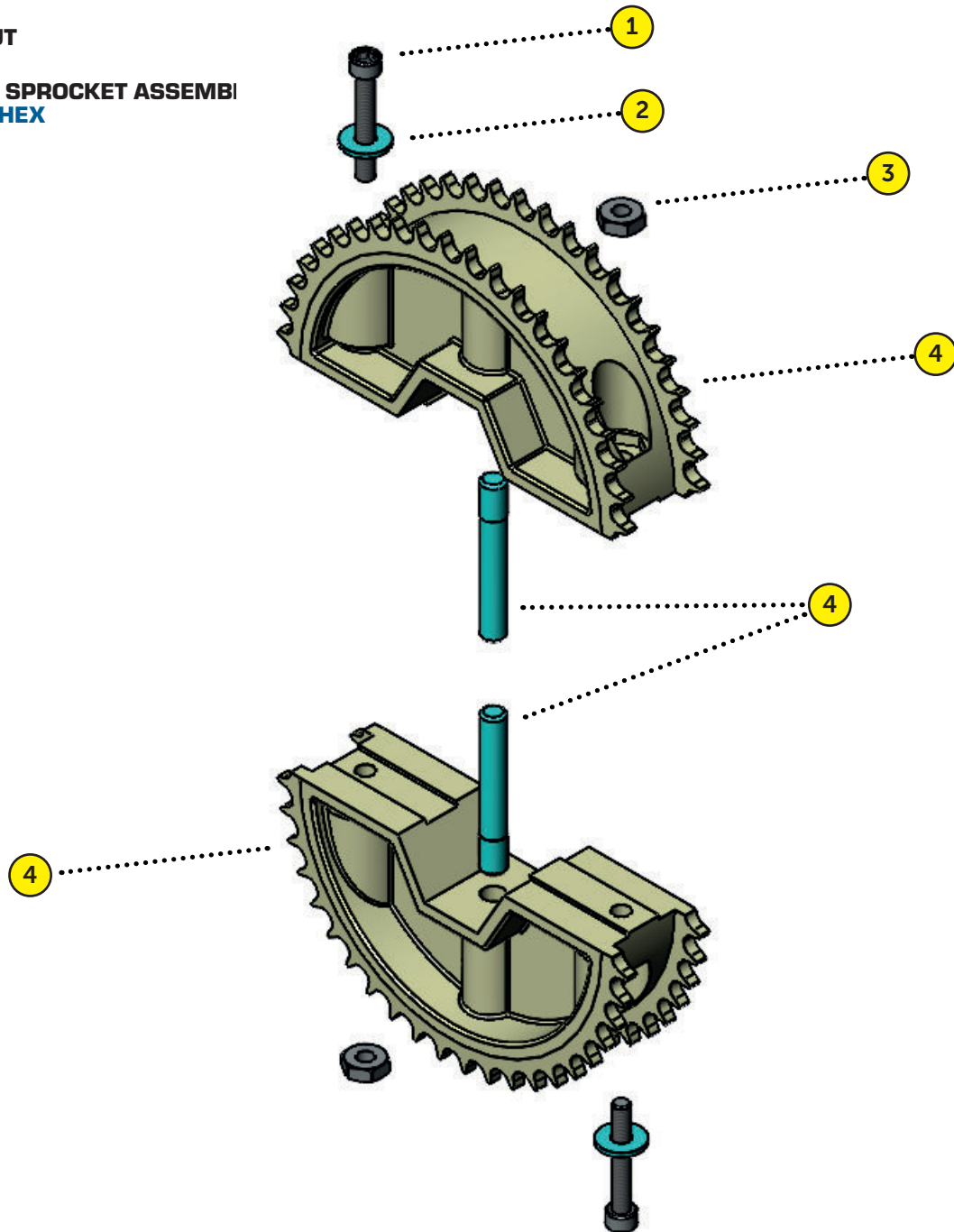


FULL ASSEMBLY | DA6600-2008-20MM
[FULL ASSEMBLY DOES NOT INCLUDE SHAFT]

MICROSPAN HEX BORE SPROCKET ASSEMBLY

KEY: C = CENTER • LH = LEFT HAND • RH = RIGHT HAND • MSG = MOVING SIDE GUIDE • (PU) = POLYURETHANE • (S) = SANTOPRENE
• (A) = ACETAL • (PP) = POLYPROPYLENE

- 1. 4-40 X 0.75 SHCS SS
933153
- 2. #4 FLAT WASHER
DS9098
- 3. 4-40 HEX NUT
DS9119
- 4. MICROSPAN SPROCKET ASSEMBLY
DB6600-2008-HEX



FULL ASSEMBLY | DA6600-2008-HEX
[FULL ASSEMBLY DOES NOT INCLUDE SHAFT]

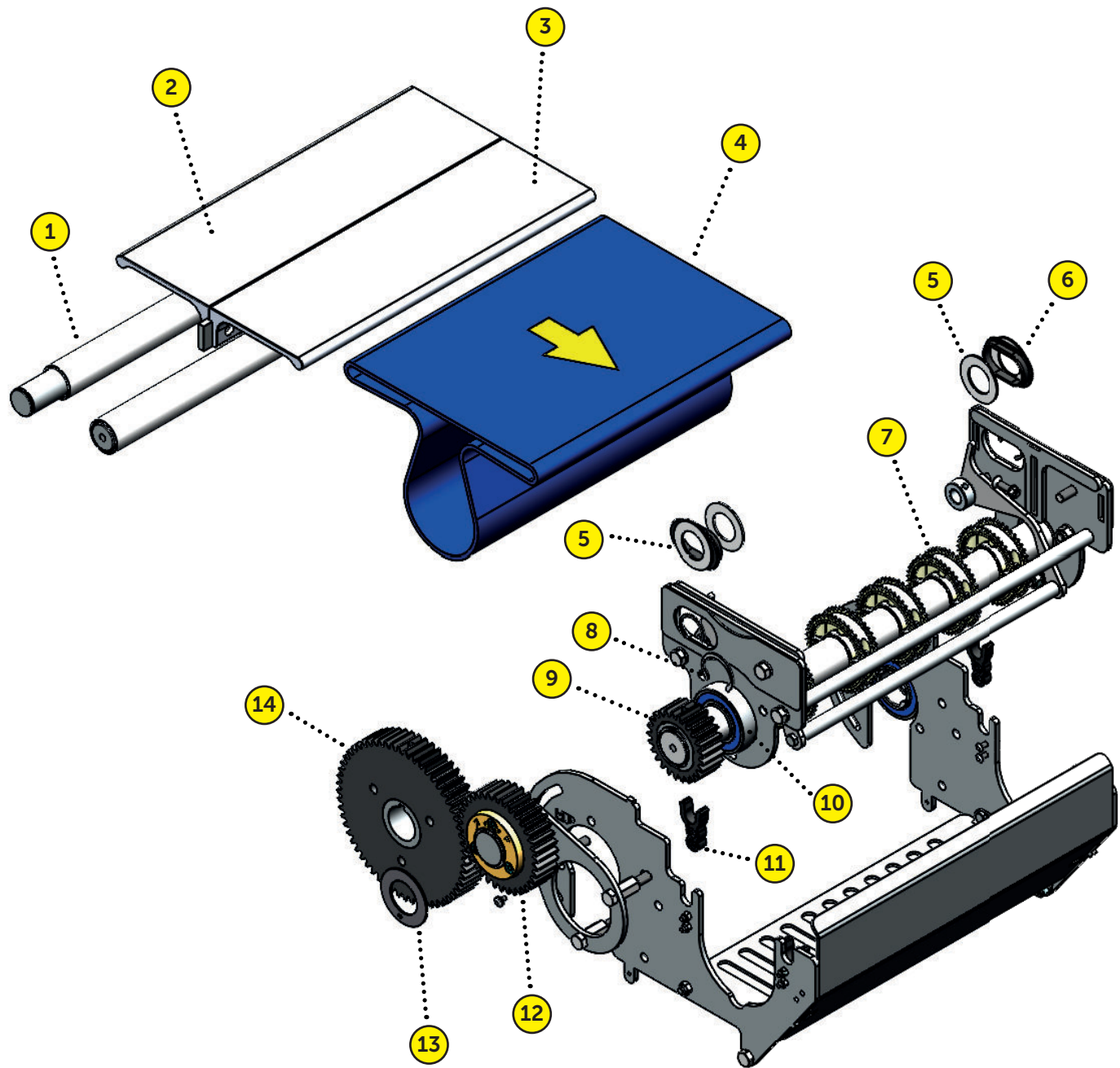
A large graphic element consisting of a central yellow horizontal bar with a diagonal hatching pattern. This bar is flanked by two larger, light gray rectangular areas, also with a diagonal hatching pattern, positioned above and below the yellow bar. The text is centered within the yellow bar.

TRANSFERS

[COMPONENTS]

MICROSPAN TRANSFER TRANSFER ASSEMBLY

KEY: C = CENTER • LH = LEFT HAND • RH = RIGHT HAND • MSG = MOVING SIDE GUIDE • (PU) = POLYURETHANE • (S) = SANTOPRENE
• (A) = ACETAL • (PP) = POLYPROPYLENE





MICROSPAN TRANSFER TRANSFER ASSEMBLY

KEY: C = CENTER • LH = LEFT HAND • RH = RIGHT HAND • MSG = MOVING SIDE GUIDE • (PU) = POLYURETHANE • (S) = SANTOPRENE
• (A) = ACETAL • (PP) = POLYPROPYLENE

- 1. UHMW TUBE SLEEVE | 302 MM LONG**
DB6600-1710
- 2. HIGH SPEED MST NOSEBAR | 1290 MM PLATED**
DA6600-1704-03-P
- 3. PLATED EXTRUSION NOSEBAR | 1290 MM LONG**
DA6600-1704-02-P

THESE ARE STANDARD WIDTHS. IF YOU NEED SOMETHING DIFFERENT PLEASE CONTACT THE SERVICE PARTS DEPARTMENT WITH THE REQUIRED DIMENSIONS.

- 4. MICROSPAN CHAIN**
SEE MICROSPAN CHAIN PAGE # 28
- 5. WASHER | 1" THRUST WASHER PK (10)**
95647A149-A
- 6. MICROSPAN TENSIONER END BUSHING MOLDED**
DS6600-1717M
- 7. MICROSPAN SPROCKET ASSEMBLY**
PLEASE REFER TO MICROSPAN SPROCKET SECTION PAGE # 47-50
- 8. 1 1/4" CRESCENT RING | STAINLESS STEEL**
DS9040-2000-125
- 9. SPUR GEAR | 25 TOOTH - 2.5M-20**
DB6600-25T2.5M20-01
- 10. 1 1/4" BEARING WITH EXTENDED TAB | STAINLESS STEEL**
DS4251-02SS
- 11. MICROSPAN TRANSFER ROD CLIP MOLDED**
DS6600-1743M
- 12. SPUR GEAR | 36 TOOTH - 2.5M-20**
DA6600-36T2.5M20
- 13. IGLIDE - A200 THRUST WASHER**
GTM-3254-01
- 14. SPUR GEAR | 60 TOOTH - 2.5M-20**
DB6600-60T2.5M20-01

MICROSPAN TRANSFER COVER ASSEMBLY

KEY: C = CENTER • LH = LEFT HAND • RH = RIGHT HAND • MSG = MOVING SIDE GUIDE • (PU) = POLYURETHANE • (S) = SANTOPRENE
 • (A) = ACETAL • (PP) = POLYPROPYLENE

**1. M8-1.25 X 22.2MM M/F STANDOFF SS
DS3355M**

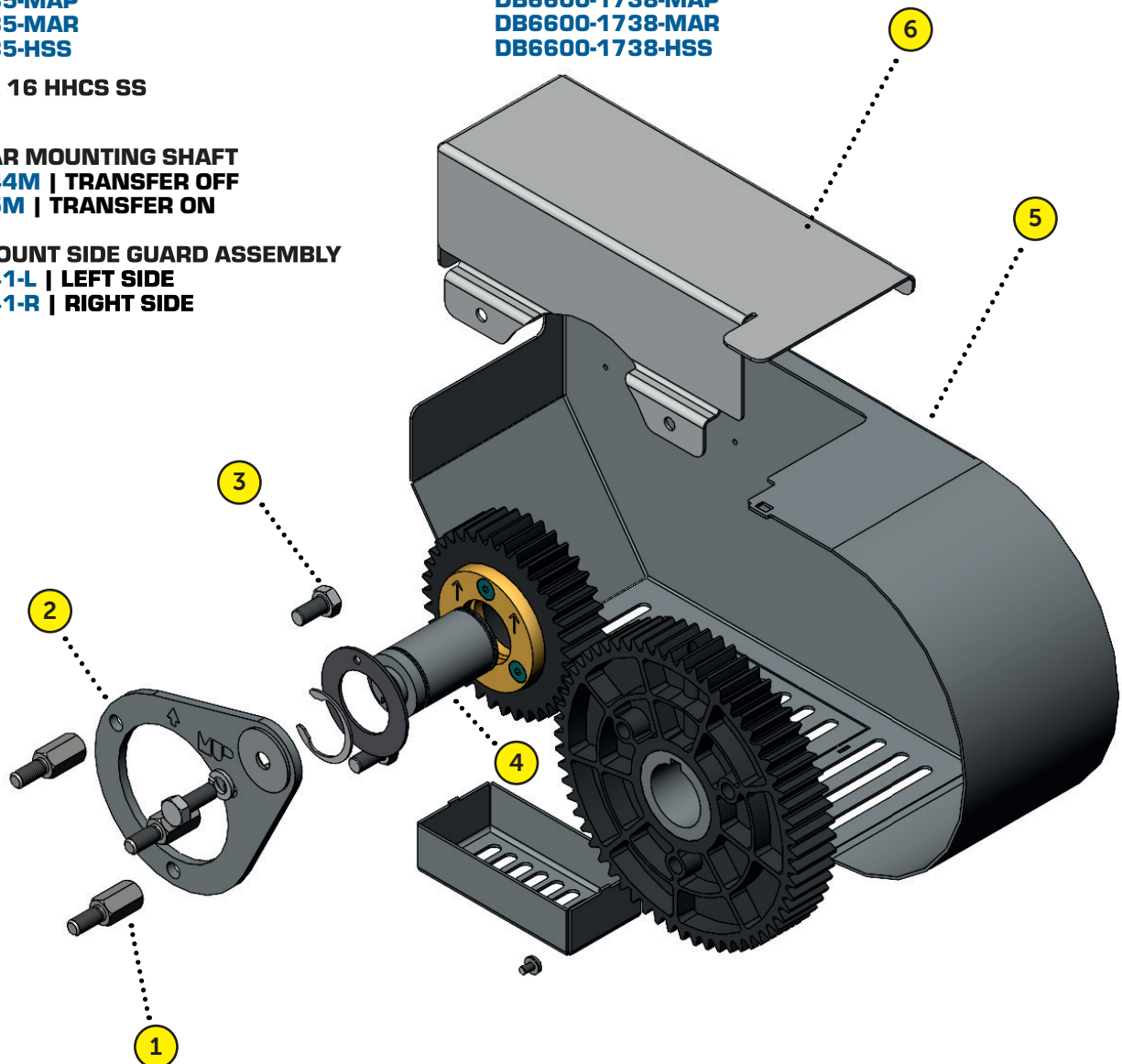
2. INTERMEDIATE GEAR FIXED PLATE (TRANSFER OFF)
DB6600-1735-MUP
DB6600-1735-MUR
DB6600-1735-MUR10
DB6600-1735-MAP
DB6600-1735-MAR
DB6600-1735-HSS

**3. M8-1.25 X 16 HHCS SS
DS9402M**

4. FIXED GEAR MOUNTING SHAFT
DB6600-1744M | TRANSFER OFF
DB660-1745M | TRANSFER ON

5. DAMST MOUNT SIDE GUARD ASSEMBLY
DB6600-1741-L | LEFT SIDE
DB6600-1741-R | RIGHT SIDE

2. INTERMEDIATE GEAR FIXED PLATE (TRANSFER ON)
DB6600-1738-MUP
DB6600-1738-MUR
DB6600-1738-MUR10
DB6600-1738-MAP
DB6600-1738-MAR
DB6600-1738-HSS



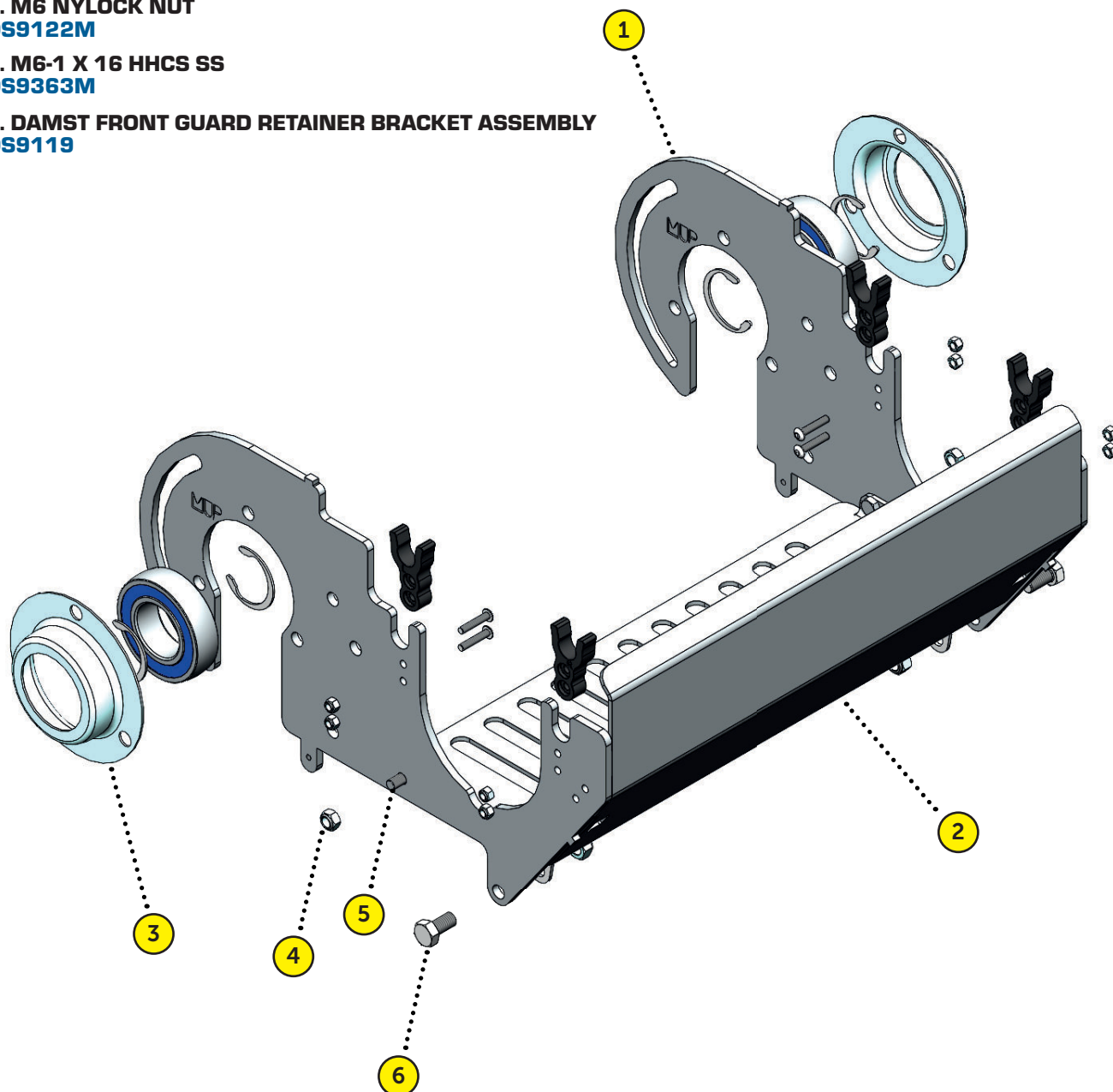
6. SIDE GUARD CHASSIS (X=(R) RIGHT OR (L) LEFT)
DB6600-1746-MUP-X
DB6600-1746-MUR-X
DB6600-1746-MUR10-X
DB6600-1746-MAP-X
DB6600-1746-MAR-X
DB6600-1746-HSS-X



MICROSPAN TRANSFER MOUNT CHASSIS

KEY: C = CENTER • LH = LEFT HAND • RH = RIGHT HAND • MSG = MOVING SIDE GUIDE • (PU) = POLYURETHANE • (S) = SANTOPRENE
• (A) = ACETAL • (PP) = POLYPROPYLENE

- 1. DBMST SIDE MOUNT PLATE MUP**
DB6600-1709-MUP-R10
- 2. MICROSPAN TRANSFER FRONT GUARD, 1203**
DBMST-FG-1203-FG-01
- 3. BEARING HOUSING SUB ASSEMBLY 1.25 BORE**
DS4061
- 4. M6 NYLOCK NUT**
DS9122M
- 5. M6-1 X 16 HHCS SS**
DS9363M
- 6. DAMST FRONT GUARD RETAINER BRACKET ASSEMBLY**
DS9119





GEAR MOTOR

[COMPONENTS]

NORD GEARMOTOR ASSEMBLY

KEY: C = CENTER • LH = LEFT HAND • RH = RIGHT HAND • MSG = MOVING SIDE GUIDE • (PU) = POLYURETHANE • (S) = SANTOPRENE
• (A) = ACETAL • (PP) = POLYPROPYLENE

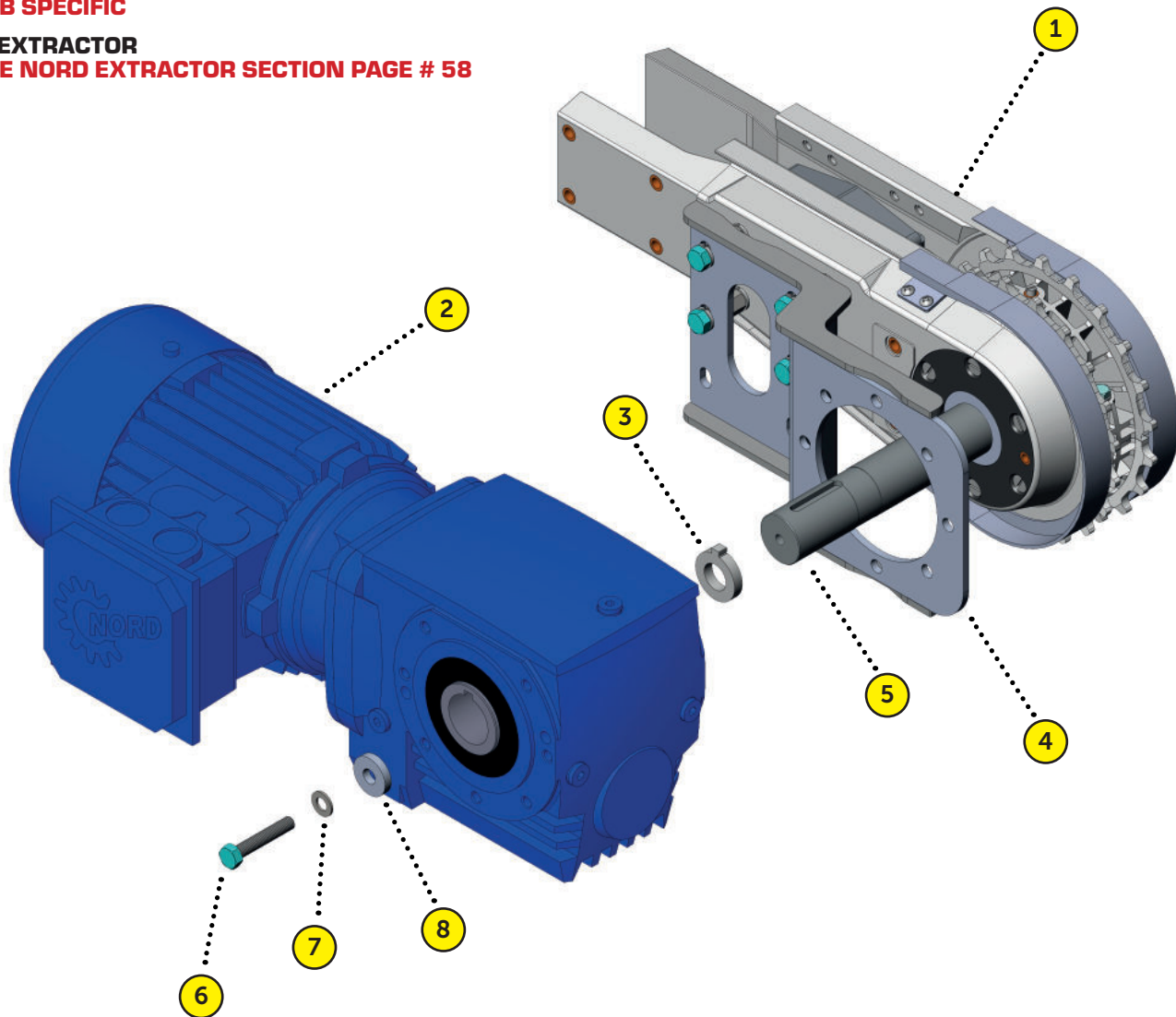
1. DRIVE ASSEMBLY

SEE DRIVES & IDLERS SECTION PAGE # 35 - 41

2. SPAN TECH SUPPLIED GEAR MOTOR JOB SPECIFIC

3. EXTRACTOR

SEE NORD EXTRACTOR SECTION PAGE # 58



4. TORQUE ARM BRACKET
GBA-0013 - STAINLESS | NORD 2040
GBA-0014 - STAINLESS | NORD 2050
JOB SPECIFIC - NON NORD GEARMOTOR

5. SHAFT EXTENSION
SEE ETCHING ON SHAFT EXTENSION

6. M8-1.25 RETAINING BOLT
DEPENDENT ON GEARBOX SIZE

7. 8MM FLAT WASHER
DS9200

8. RETAINING WASHER
PROVIDED BY GEARMOTOR COMPANY

NORD GEARMOTOR EXTRACTORS

KEY: C = CENTER • LH = LEFT HAND • RH = RIGHT HAND • MSG = MOVING SIDE GUIDE • (PU) = POLYURETHANE • (S) = SANTOPRENE
• (A) = ACETAL • (PP) = POLYPROPYLENE



GXE-N02040
.75 BORE EXTRACTOR



GXE-N02050-12063
1.25 BORE EXTRACTOR



GXE-N02050-12063M
30MM BORE EXTRACTOR

SEW GEARMOTOR ASSEMBLY

KEY: C = CENTER • LH = LEFT HAND • RH = RIGHT HAND • MSG = MOVING SIDE GUIDE • (PU) = POLYURETHANE • (S) = SANTOPRENE
• (A) = ACETAL • (PP) = POLYPROPYLENE

1. DRIVE ASSEMBLY

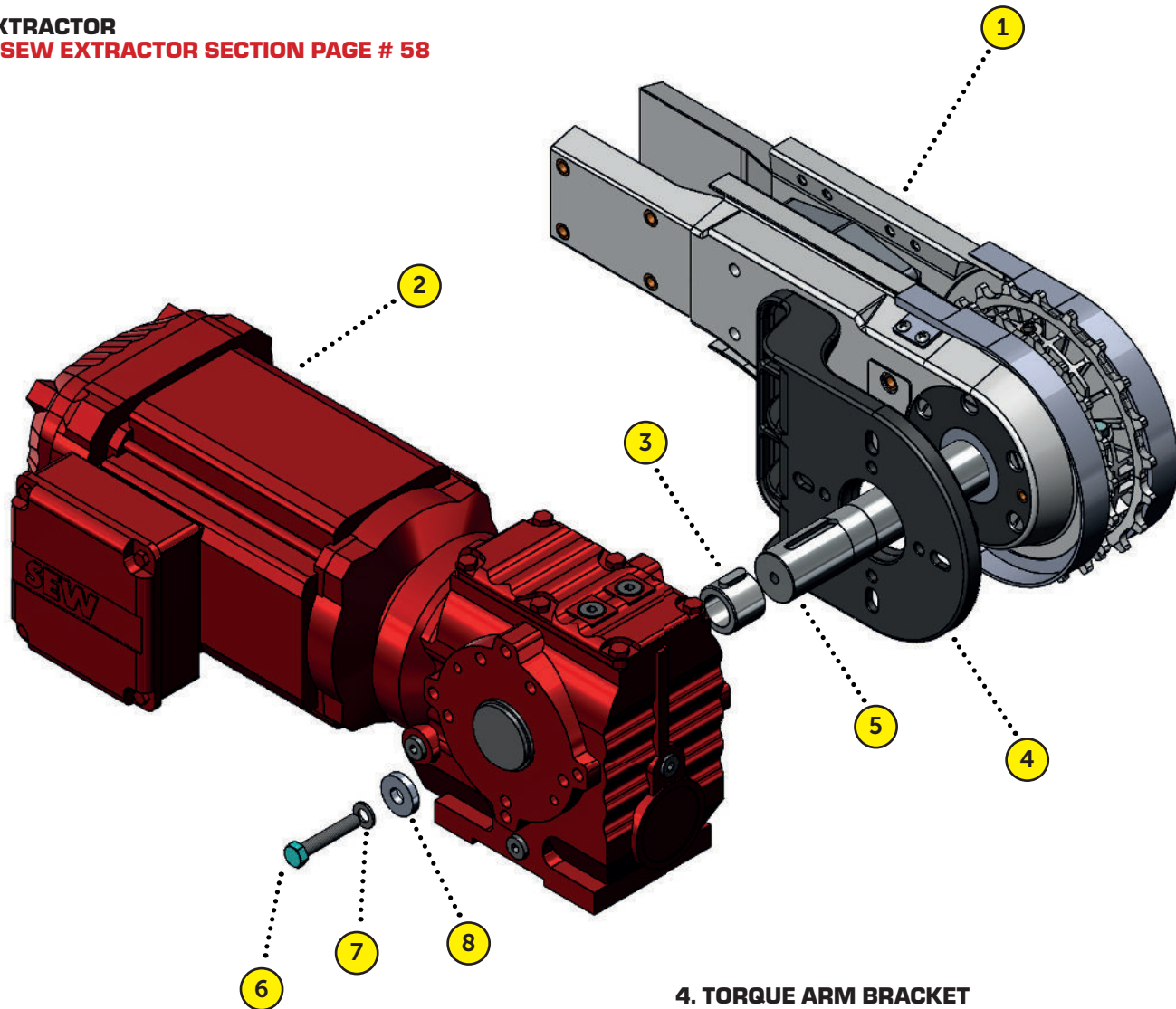
SEE DRIVES & IDLERS SECTION PAGE # 35 - 41

2. SPAN TECH SUPPLIED GEAR MOTOR

JOB SPECIFIC

3. EXTRACTOR

SEE SEW EXTRACTOR SECTION PAGE # 58



4. TORQUE ARM BRACKET
GBA-0001M - MOLDED | SEW 37/47/57
GBA-0001 - STAINLESS | SEW 37/47/57
JOB SPECIFIC - NON SEW GEARMOTOR

5. SHAFT EXTENSION
SEE ETCHING ON SHAFT EXTENSION

6. M8-1.25 RETAINING BOLT
DEPENDENT ON GEARBOX SIZE

7. 8MM FLAT WASHER
DS9200

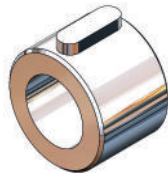
8. RETAINING WASHER
PROVIDED BY GEARMOTOR COMPANY

SEW GEARMOTOR EXTRACTORS

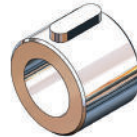
KEY: C = CENTER • LH = LEFT HAND • RH = RIGHT HAND • MSG = MOVING SIDE GUIDE • (PU) = POLYURETHANE • (S) = SANTOPRENE
• (A) = ACETAL • (PP) = POLYPROPYLENE



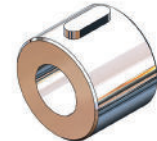
GXA-SA37



GXA-KA37



GXA-SA47-SA57



GXA-KA57-KA67



GXA-SA67



GXA-SA77-KA77



GXA-WA20-WA30



GXA-KA37M



GXA-KA57-KA67M



GXA-SA37M



GXA-SA47-SA57M



GXA-SA67M



GXA-SA77-KA77M



DS9170-.250-.750-01



DS9170-.375-.750



DS9170-.500-.750



Main Office | 101 Hilltopper Way, Glasgow KY, 42141
Shipping & Receiving | 725 Roseville Rd, Glasgow KY, 42141

(270) 651-9166 | Service & Parts
spare_parts@spantechllc.com

www.spantechconveyors.com

FOLLOW US ON SOCIAL MEDIA AND KEEP UP WITH ALL OF OUR INNOVATIVE SOLUTIONS

