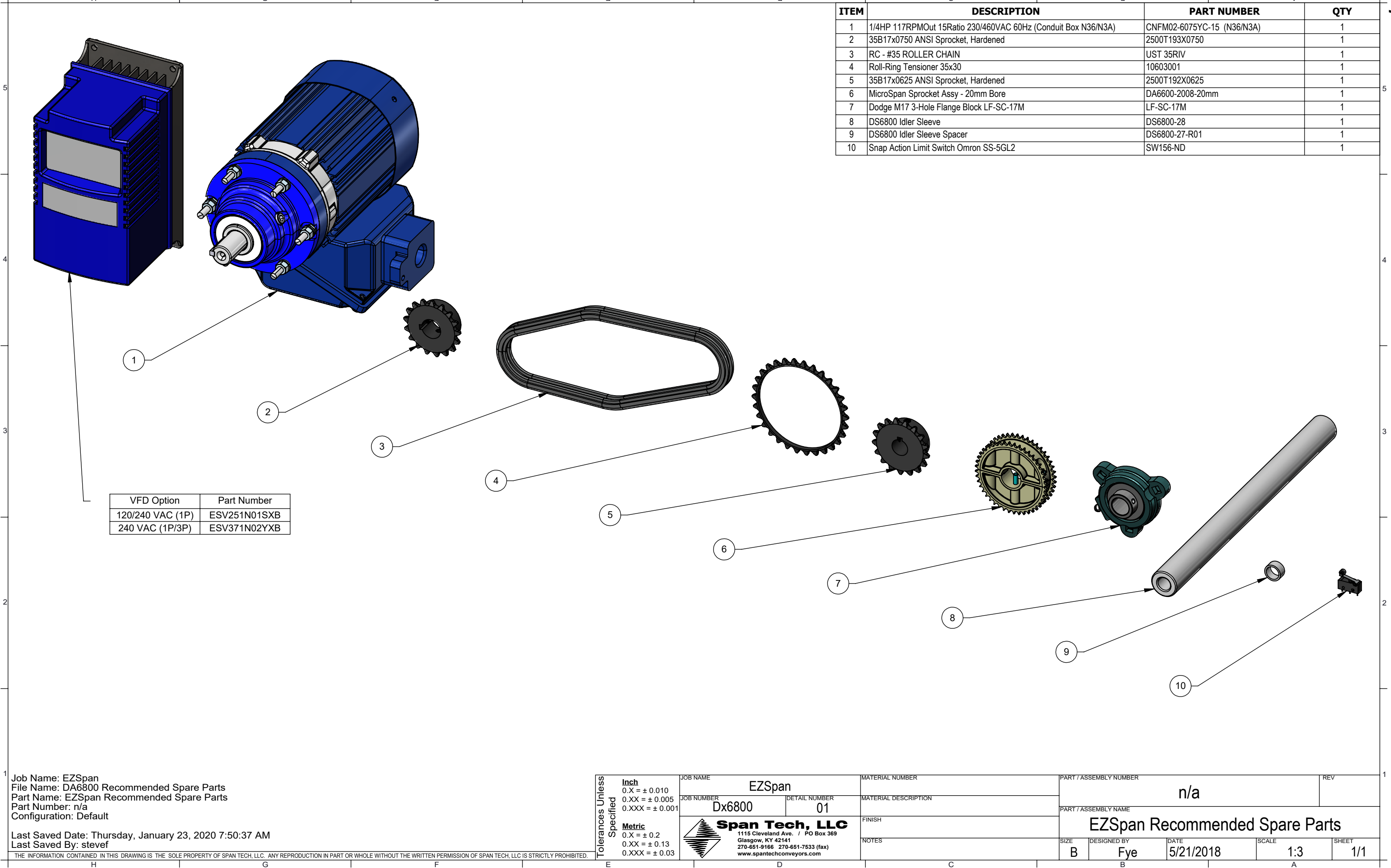


EZSpan Recommended Spare Parts



ITEM	DESCRIPTION	PART NUMBER	QTY
1	1/4HP 117RPMOut 15Ratio 230/460VAC 60Hz (Conduit Box N36/N3A)	CNFM02-6075YC-15 (N36/N3A)	1
2	35B17x0750 ANSI Sprocket, Hardened	2500T193X0750	1
3	RC - #35 ROLLER CHAIN	UST 35RIV	1
4	Roll-Ring Tensioner 35x30	10603001	1
5	35B17x0625 ANSI Sprocket, Hardened	2500T192X0625	1
6	MicroSpan Sprocket Assy - 20mm Bore	DA6600-2008-20mm	1
7	Dodge M17 3-Hole Flange Block LF-SC-17M	LF-SC-17M	1
8	DS6800 Idler Sleeve	DS6800-28	1
9	DS6800 Idler Sleeve Spacer	DS6800-27-R01	1
10	Snap Action Limit Switch Omron SS-5GL2	SW156-ND	1

Job Name: EZSpan
File Name: DA6800 Recommended Spare Parts
Part Name: EZSpan Recommended Spare Parts
Part Number: n/a
Configuration: Default

Last Saved Date: Thursday, January 23, 2020 7:50:37 AM
Last Saved By: stevef

THE INFORMATION CONTAINED IN THIS DRAWING IS THE SOLE PROPERTY OF SPAN TECH, LLC. ANY REPRODUCTION IN PART OR WHOLE WITHOUT THE WRITTEN PERMISSION OF SPAN TECH, LLC IS STRICTLY PROHIBITED.

Tolerances Unless Specified

Inch

0.X = ± 0.010

0.XX = ± 0.005

0.XXX = ± 0.001

Metric

0.X = ± 0.2

0.XX = ± 0.13

0.XXX = ± 0.03

JOB NAME

EZSpan

JOB NUMBER

Dx6800

DETAIL NUMBER

01

Span Tech, LLC

1115 Cleveland Ave. / PO Box 369

Glasgow, KY 42141

270-651-9166 270-651-7533 (fax)

www.spantechconveyors.com

MATERIAL NUMBER

MATERIAL DESCRIPTION

FINISH

NOTES

PART / ASSEMBLY NUMBER

n/a

PART / ASSEMBLY NAME

EZSpan Recommended Spare Parts

SIZE

B

DESIGNED BY

Fye

DATE

5/21/2018

SCALE

1:3

SHEET

1/1

REV

n/a