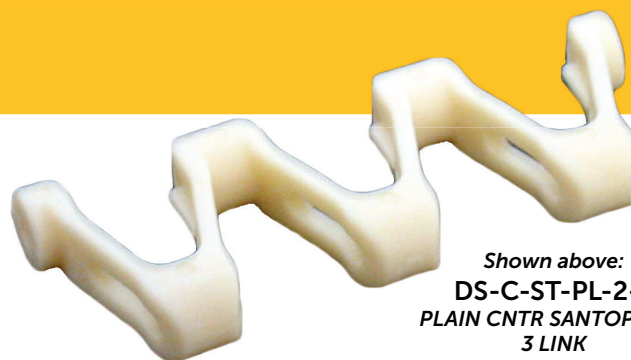


# SUPERTIGHT CHAIN

SuperTight chain is a variation of Span Tech's proven MultiSpan conveyor chain. SuperTight is lighter in weight than MultiSpan yet just as strong and offers one of the tightest turning radii in the industry.

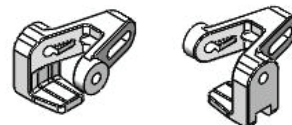
Initially developed for use with spiral conveyors, SuperTight works equally well for standard applications and is ideal when a smaller horizontal turning radius is needed. In many cases SuperTight chain can also be the most economical choice, especially when dealing with chain widths greater than 10.85".

Combining horizontal curves and elevation changes is no problem, due to the unique flexibility of Supertight chain.

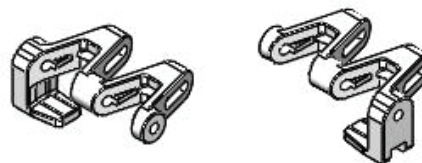


Shown above:  
DS-C-ST-PL-2-S  
PLAIN CNTR SANTOPRENE  
3 LINK

## ACETAL MATERIAL



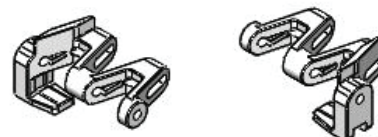
DS0126-02A 1/2 - LEFT HAND PLAIN 1/2  
DS0127-02A 1/2- RIGHT HAND PLAIN 1/2



DS0126-02A - LEFT HAND PLAIN  
DS0127-02A- RIGHT HAND PLAIN



DS0128-03A1/2 - LH MSG 6MM 1/2  
DS0129-03A 1/2- RH MSG 6MM 1/2



DS0128-03A - LH MSG 6MM  
DS0129-03A - RH MSG 6MM

### CHAIN OPTIONS:

- Plain
- 6mm Raised Top
- 6mm Moving Side Guide
- 75mm Moving Side Guide
- Plain High Friction
- 6mm Raised Top High Friction
- 6mm Brush Top High Friction
- 10mm Brush Top High Friction

### PITCH

- 25mm (0.98")

### AVAILABLE WIDTH RANGE


- FROM 3.76" - 46.28" & beyond

### MATERIAL OPTIONS

Available in materials resistant to most chemicals and temperatures ranging from -40° to 220° F

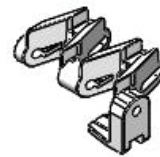
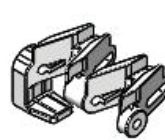
### USDA APPROVED BISSC CERTIFIED

**ACETAL MATERIAL CONT.**

 SuperTight chain has a weight of 1.9 lbs. ft<sup>2</sup> and has a load carrying capacity of 50 lbs. ft<sup>2</sup>. SuperTight chain is connected by 0.16" (4mm) diameter stainless steel connecting rods and plastic chain link lock tabs.



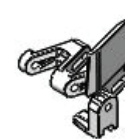
DS0132-02A 1/2 - LH RAISED 6MM 1/2  
DS0133-02A 1/2- RH RAISED 6MM 1/2



DS0132-02A - LH RAISED 6MM  
DS0133-02A - RH RAISED 6MM



DS0136-01A-30 1/2 - LH 30MM MSG 1/2  
DS0137-01A-30 1/2- RH 30MM MSG 1/2



DS0136-01A-30 - LH 30MM MSG  
DS0137-01A-30 - RH 30MM MSG



DS0136-01A 1/2- LH 75MM MSG 1/2  
DS0137-01A 1/2- RH 75MM MSG 1/2



DS0136-01A - LH 75MM MSG  
DS0137-01A - RH 75MM MSG



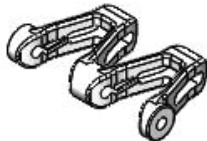
DS0138-01A 1/2- LH 75MM MSG/PUSHER 1/2  
DS0139-01A 1/2- RH 75MM MSG/PUSHER 1/2



DS0138-01A - LH 75MM MSG/PUSHER  
DS0139-01A - RH 75MM MSG/PUSHER



DS-C-ST-PL-1-A  
PLAIN CENTER  
1 LINK



DS-C-ST-PL-2-A  
PLAIN CENTER  
2 LINK



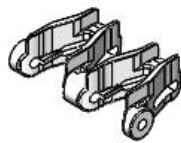
DS-C-ST-PL-3-A  
PLAIN CENTER  
3 LINK



DS0134-02A  
PLAIN CENTER  
7 LINK



DS C ST 6MM RT 1 A  
6MM RAISED CENTER  
1 LINK



DS C ST 6MM RT 2 A  
6MM RAISED CENTER  
2 LINK



DS C ST 6MM RT 3 A  
6MM RAISED CENTER  
3 LINK

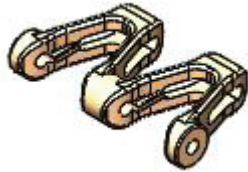


DS0135-02A  
6MM RAISED CENTER  
7 LINK



Santoprene is ideal for glossy, finished or printed cardboard, plastic containers or metal.

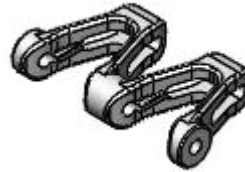
## SANTOPRENE & POLYURETHANE HIGH FRICTION



DS-C-ST-PL-2-S  
PLAIN CENTER  
2 LINK



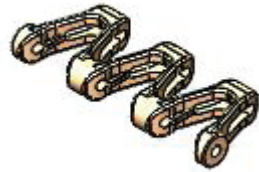
DS-C-ST-6MM-BT-2-S  
6MM BRUSH TOP  
2 LINK



DS-C-ST-PL-2-PU  
PLAIN CENTER  
2 LINK



DS-C-ST-6MM-BT-2-PU  
6MM BRUSH TOP  
2 LINK



DS-C-ST-PL-3-S  
PLAIN CENTER  
3 LINK



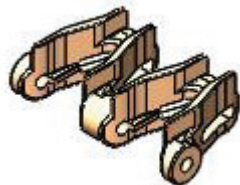
DS-C-ST-6MM-BT-3-S  
6MM BRUSH TOP  
3 LINK



DS-C-ST-PL-3-PU  
PLAIN CENTER  
3 LINK



DS-C-ST-6MM-BT-3-PU  
6MM BRUSH TOP  
3 LINK



DS-C-ST-6MM-RT-2-S  
6MM RAISED  
2 LINK



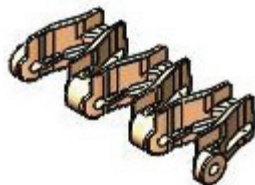
DS-C-ST-10MM-BT-2-S  
10MM BRUSH TOP  
2 LINK



DS-C-ST-6MM-RT-2-PU  
6MM RAISED  
2 LINK



DS-C-ST-10MM-BT-2-PU  
10MM BRUSH TOP  
2 LINK



DS-C-ST-6MM-RT-3-S  
6MM RAISED  
3 LINK



DS-C-ST-10MM-BT-3-S  
10MM BRUSH TOP  
3 LINK



DS-C-ST-6MM-RT-3-PU  
6MM RAISED  
3 LINK



DS-C-ST-10MM-BT-3-PU  
10MM BRUSH TOP  
3 LINK



The above information has been provided as guidelines only, and does not represent all design variations possible. For detailed or specific design requirements, please contact a representative.